

Audax







bianco



beige



nero

# Audax

## Classico

DIGITAL  
TECHNOLOGY

GRES PORCELLANATO  
IMPASTO COLORATO



noce



mogano



quercia



# Audax

## mOderno

Sei tonalità tra cui scegliere: eleganza e tradizione dei tre colori classici; innovazione e originalità nei tre colori moderni.

*Six colors to choose from: elegance and tradition of the three standard colors; innovation and originality in three modern colors.*

*Шесть оттенков на выбор: элегантность и традиция трех классических цветов; инновация и оригинальность в трех современных цветах.*





BOOPERNO



Noce

*Classico*

Audax Noce 22,4x90 - 15x90 - 11x90







G1197A AUDAX BIANCO RETTIFICATO 11x90 - 4,4"x35,5"

66



G1185A AUDAX BIANCO RETTIFICATO 15x90 - 6"x35,5"

65



G1191A AUDAX BIANCO RETTIFICATO 22,4x90 - 8,8"x35,5"

65



G1196A AUDAX BEIGE RETTIFICATO 11x90 - 4,4"x35,5"

66



G1184A AUDAX BEIGE RETTIFICATO 15x90 - 6"x35,5"

65



G1190A AUDAX BEIGE RETTIFICATO 22,4x90 - 8,8"x35,5"

65



G1198A AUDAX NERO RETTIFICATO 11x90 - 4,4"x35,5"

66



G1186A AUDAX NERO RETTIFICATO 15x90 - 6"x35,5"

65



G1192A AUDAX NERO RETTIFICATO 22,4x90 - 8,8"x35,5"

65



G30803 ANG. 6  
BACCHETTA ALLUMINIO  
1,5x1,5 - 0,6"x0,6"



G30801 BACCHETTA ALLUMINIO  
1,5x90 - 0,6"x35,5"

19



G30804 ANG. 6  
BACCHETTA CROMO  
1,5x1,5 - 0,6"x0,6"



G30802 BACCHETTA CROMO  
1,5x90 - 0,6"x35,5"

18



G30079 BATTISCOPA BIANCO 7x90 - 2,8"x35,5"  
G30080 BATTISCOPA BEIGE 7x90 - 2,8"x35,5"  
G30081 BATTISCOPA NERO 7x90 - 2,8"x35,5"

18

18

18





G1194A AUDAX NOCE RETTIFICATO 11x90 - 4,4"x35,5"

66



G1182A AUDAX NOCE RETTIFICATO 15x90 - 6"x35,5"

65



G1188A AUDAX NOCE RETTIFICATO 22,4x90 - 8,8"x35,5"

65



G1195A AUDAX MOGANO RETTIFICATO 11x90 - 4,4"x35,5"

66



G1183A AUDAX MOGANO RETTIFICATO 15x90 - 6"x35,5"

65



G1189A AUDAX MOGANO RETTIFICATO 22,4x90 - 8,8"x35,5"

65



G1193A AUDAX GRIGIO RETTIFICATO 11x90 - 4,4"x35,5"

66



G1181A AUDAX GRIGIO RETTIFICATO 15x90 - 6"x35,5"

65



G1187A AUDAX GRIGIO RETTIFICATO 22,4x90 - 8,8"x35,5"

65

G30803 ANG. 6  
BACCHETTA ALLUMINIO  
1,5x1,5 - 0,6"x0,6"

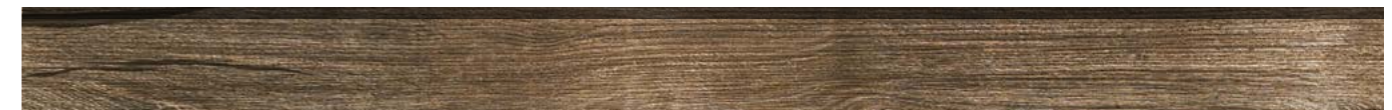
G30801 BACCHETTA ALLUMINIO  
1,5x90 - 0,6"x35,5"

19

G30804 ANG. 6  
BACCHETTA CROMO  
1,5x1,5 - 0,6"x0,6"

G30802 BACCHETTA CROMO  
1,5x90 - 0,6"x35,5"

18



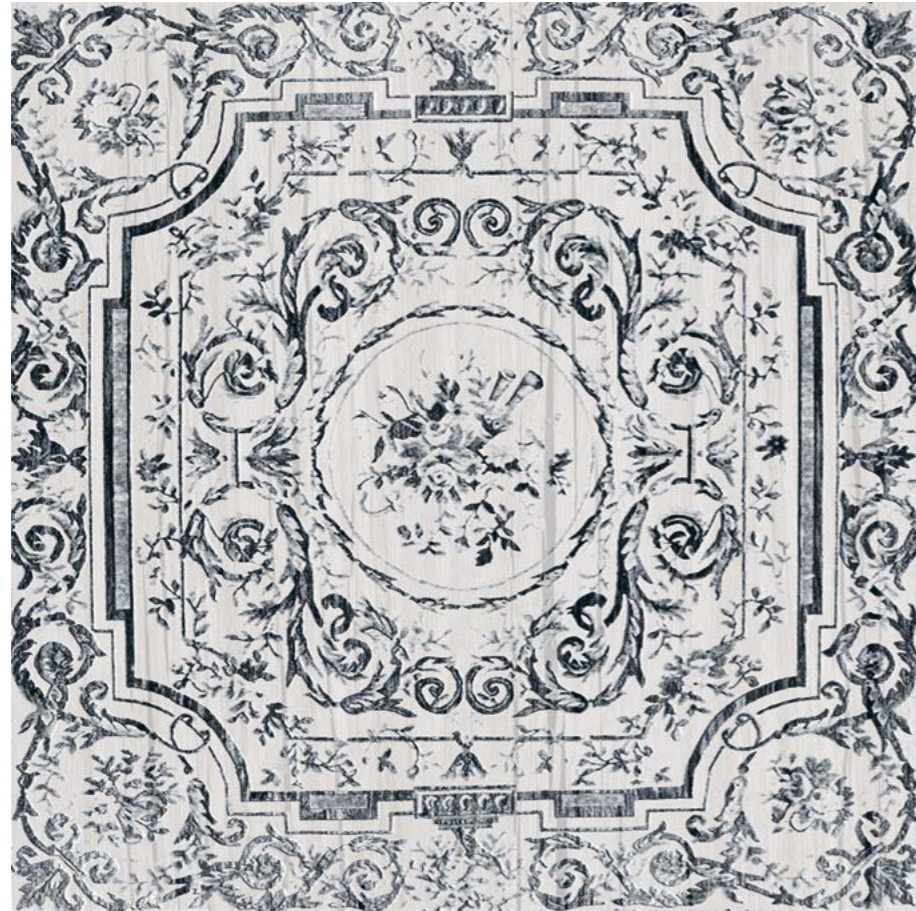
G30082 BATTISCOPA MOGANO 7x90 - 2,8"x35,5"  
G30083 BATTISCOPA NOCE 7x90 - 2,8"x35,5"  
G30084 BATTISCOPA GRIGIO 7x90 - 2,8"x35,5"

18

18

18

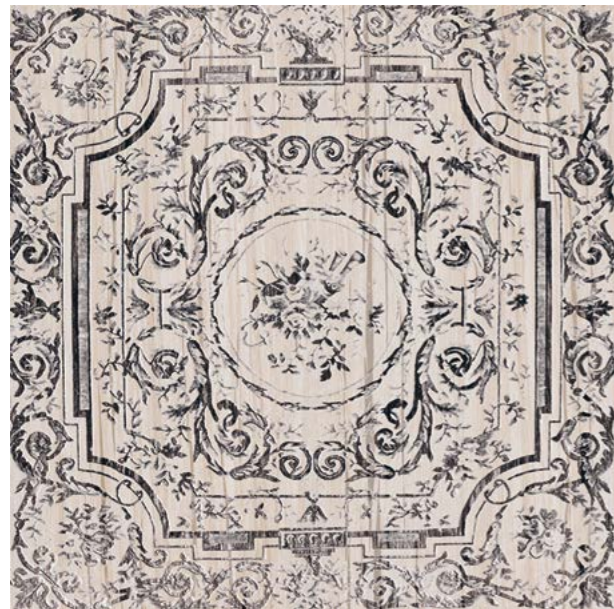




Audax Bianco Decoro Impero 90x90 - 35,5"x35,5" - 6 pz 15x90 - 6"x35,5"



Audax Noce Decoro Impero 90x90 - 35,5"x35,5" - 6 pz 15x90 - 6"x35,5"



Audax Beige Decoro Impero 90x90 - 35,5"x35,5"  
6 pz 15x90 - 6"x35,5"



Audax Nero Decoro Impero 90x90 - 35,5"x35,5"  
6 pz 15x90 - 6"x35,5"



Audax Mogano Decoro Impero 90x90 - 35,5"x35,5"  
6 pz 15x90 - 6"x35,5"

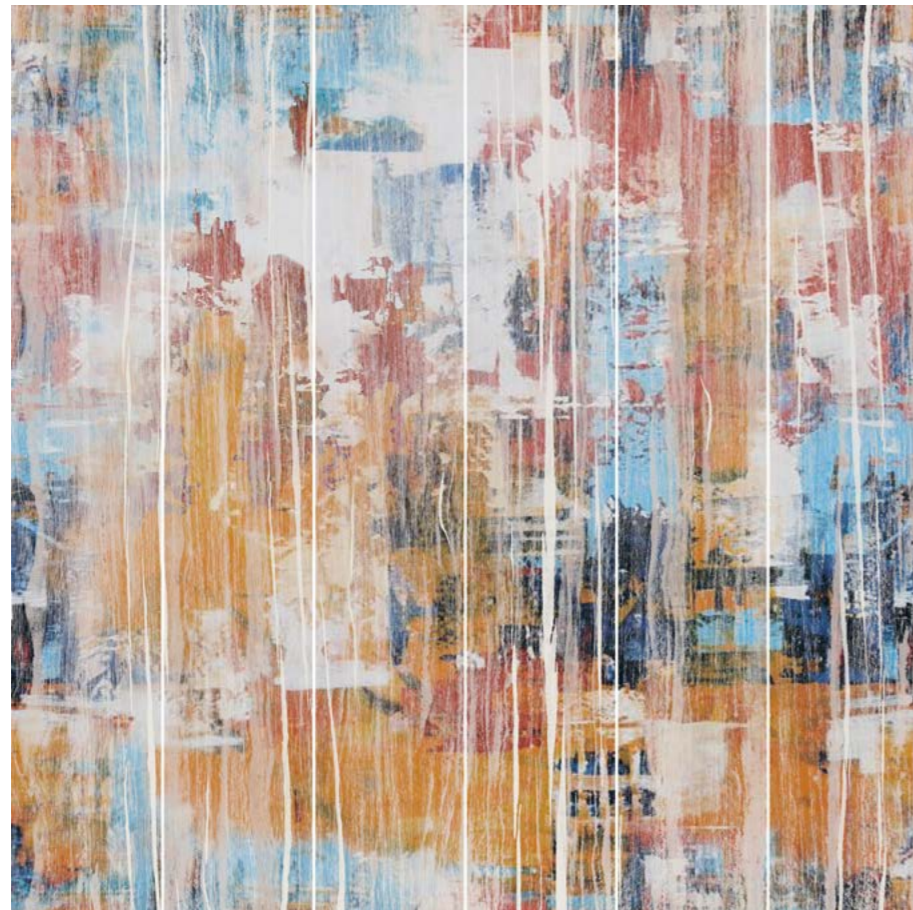


Audax Grigio Decoro Impero 90x90 - 35,5"x35,5"  
6 pz 15x90 - 6"x35,5"





Audax Decoro Cantine A 90x90 - 35,5"x35,5" - 6 pz 15x90 - 6"x35,5"



Audax Decoro Astratto 90x90 - 35,5"x35,5" - 6 pz 15x90 - 6"x35,5"



Audax Decoro Cantine B 90x90 - 35,5"x35,5" - 6 pz 15x90 - 6"x35,5"





Audax Bianco Decoro Fiori 90x90 - 35,5"x35,5" - 6 pz 15x90 - 6"x35,5"



Audax Noce - Bianco 15x90 - Decoro Fiori



Audax Beige Decoro Fiori 90x90 - 35,5"x35,5" - 6 pz 15x90 - 6"x35,5"



Audax Beige 15x90 - Decoro Fiori





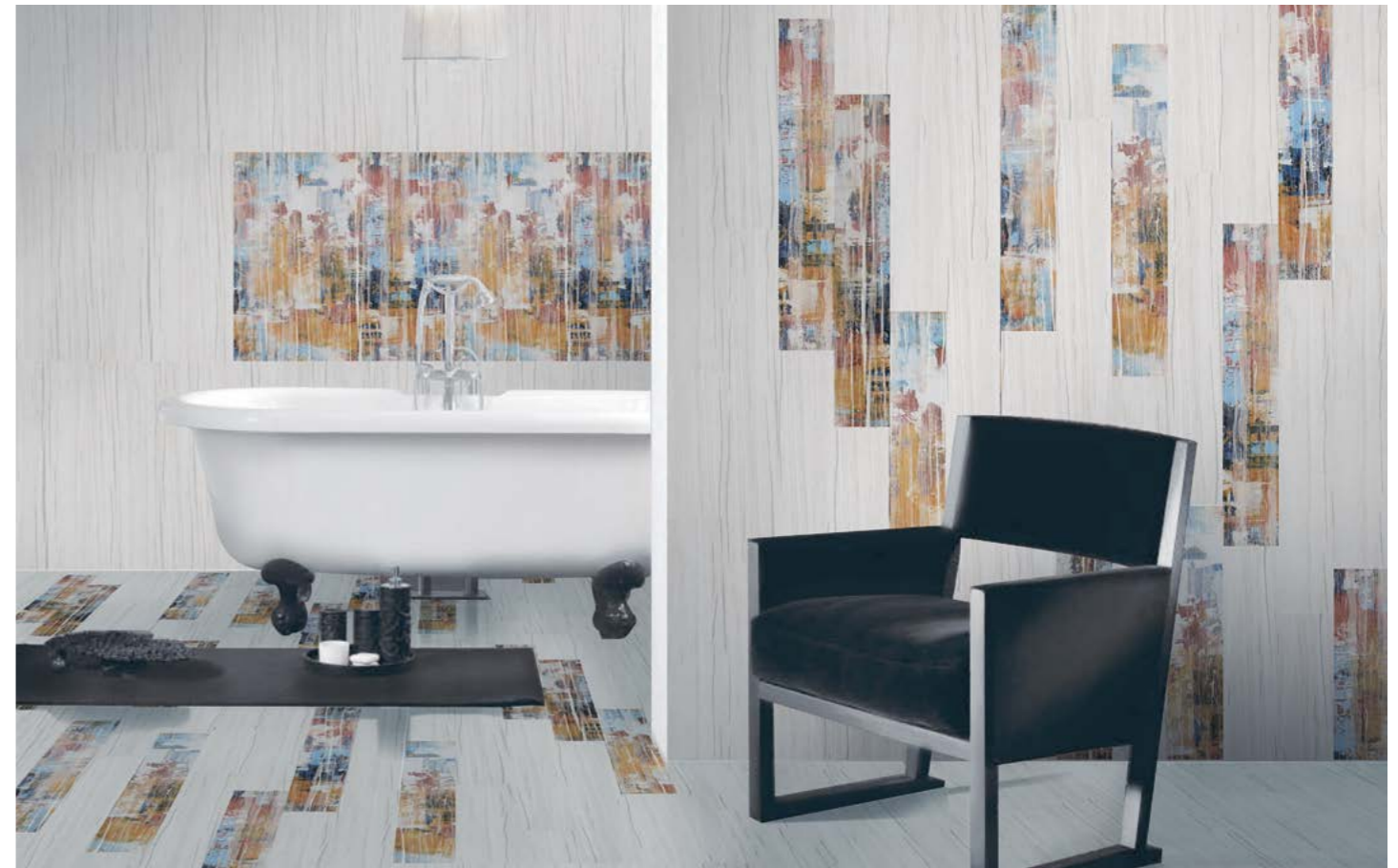
Audax Nero - Bianco 15x90 - Decoro Impero



Audax Beige 15x90 - Decoro Astratto












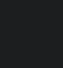


Audax Beige 15x90 - Decoro Impero



Audax Bianco 15x90 - Decoro Astratto



	<b>CARATTERISTICHE TECNICHE</b> TECHNICAL CHARACTERISTICS CARACTERISTIQUES TECHNIQUES TECHNISCHE EIGENSCHAFTEN	<b>METODO DI PROVA ASTM</b> TEST METHOD ASTM METHODE D'ESSAI ASTM PRÜFMETHODE ASTM	<b>REQUISITI PRESCRITTI</b> Required Value Valeur Requirse Vorgeschriebener Wert ANSI 137.1	<b>VALORI</b> Value/Valeur/Wert <b>VALLELUNGA</b> SMALTATO GLAZED GL
	<b>ASSORBIMENTO D'ACQUA</b> WATER ABSORPTION ABSORPTION D'EAU WASSERABSORPTION	EN-ISO 10545-3	0,5% (fully vitrified)	≤ 0,05
	<b>RESISTENZA ALLA ROTTURA</b> BREAKING MODULUS RÉSISTANCE À LA FLEXION BIEGEFESTIGKEIT	EN-ISO 10545-4	≥250 Pounds ≥113 Kg ≥1110 N	CONFORME Compliant
	<b>DUREZZA MOHS</b> MOHS HARDNESS DURETÉ MOHS HAERTE MOHS	EN-ISO 101		MOHS 5
	<b>RESISTENZA ALL'ABRASIONE</b> ABRASION RESISTANCE RÉSISTANCE À L'ABRASION ABRASIONSWIDERSTÄNDIGKEIT	EN-ISO 10545-7	NON RICHIESTO Not required	METODO DI PROVA ISO 10545-7 PEI V
	<b>RESISTENZA AGLI SBALZI TERMICI</b> THERMAL SHOCK RESISTANCE RÉSISTANCE AUX CHOC THERMIQUES TEMPERATURWECHSELBESTÄNDIGKEIT	ASTM C484	RICHIESTO required	RESISTENTE Resistant
	<b>RESISTENZA ALLO SCIVOLAMENTO</b> SLIP RESISTANCE RÉSISTANCE AU GLISSEMENT RUTSCHFESTIGKEIT	DIN 51130	RICHIESTO required	<b>R9</b>
	<b>MISURA DEL COEFFICIENTE DI ATRITO STATICO</b> DETERMINATION OF STATIC COEFFICIENT OF FRICTION MISURE DE FRICTION STATIQUE MESSUNG VON STATISCHEN FRICTION	ASTM C1028	RICHIESTO required	≥ 0,60
	<b>RESISTENZA ALL'ATTACCO CHIMICO</b> CHEMICAL RESISTANCE RÉSISTANCE CHIMIQUE CHEMISCHE BESTÄNDIGKEIT	EN-ISO 10545-13	NON RICHIESTO Not required	RESISTENTE Resistant
	<b>RESISTENZA AL GELO</b> FROST RESISTANCE RÉSISTANCE AU GEL FROSTBESTÄNDIGKEIT	EN-ISO 10545-12	NON RICHIESTO Not required	RESISTENTE Resistant
	<b>RESISTENZA ALLE MACCHIE</b> STAIN RESISTANCE RÉSISTANCE AUX TACHES FLECKENBESTÄNDIGKEIT	EN-ISO 10545-14	NON RICHIESTO Not required	RESISTENTE Resistant
	<b>SPESORE</b> THICKNESS ÉPAISSEUR STÄRKE	ASTM C485 Planarit Warpage	≤ 1,0% Sui lati/On sides ≤ 0,75% Sulle diagonali/On diagonals	CONFORME Compliant
		ASTM C499 Dimensioni Dimensions	≤ 3,0% Sulle dimensioni nominali Of nominal dimensions ≤ 1,5% Differenza nel lotto tra valori min. e max./Difference in batch between min. and major values	CONFORME Compliant
		ASTM C499 Spessore Thickness	≤ 0,040 inch Differenza nel lotto tra spessore min. e max. Difference in batch between min. and major thickness	CONFORME Compliant
		ASTM C502 Parallelismo dei lati Wedging	≤ 1,0 %	CONFORME Compliant

AMOUNT OF  
COLOUR  
VARIATION**V3**  
HIGH  
COLOR  
VARIATION

Audax

Imballaggi - packing - emballages - verpackung - Упаковки

Formato Size cm Format cm Формат см	Pezzi/scatola Pieces/box Pièces/boîte Stück/Karton Изделий/коробку	Mq/scatola Sq.Mt./box Mq/boîte Qm/Karton M2/коробку	Kg/scatola Weight/box Poids/boîte Gewichte/Karton Kг/коробку	Scatole/pallet Box/pallet Boîte/pallet Karton/pallet Коробок/паллету	Mq/pallet Sq.Mt./pallet Mq/pallet Qm/pallet M2/паллету	Kg/pallet Weight/pallet Poids/pallet Gewichte/pallet Kг/паллету	Spessore Thickness Épaisseur Stärke Толщина
22.4x90 Fondo Rett.	6	1,22	28	54	65,88	1532	10
15x90 Fondo Rett.	6	0,81	18	72	58,32	1316	10
11x90 Fondo Rett.	-	-	-	-	-	-	10
7x90 Battiscopa	6	-	-	36	-	-	-



Ceramics of Italy



MADE IN ITALY



LOVE  
green



U.S. GREEN BUILDING COUNCIL  
MEMBER



ceramica  
VALLELUNGA



ceramica  
VALLELUNGA