



Downtown

Downtown Beige_33,3*100 Downtown Beige_90*90
 Lenk 19,5x121,5 AS Walnut



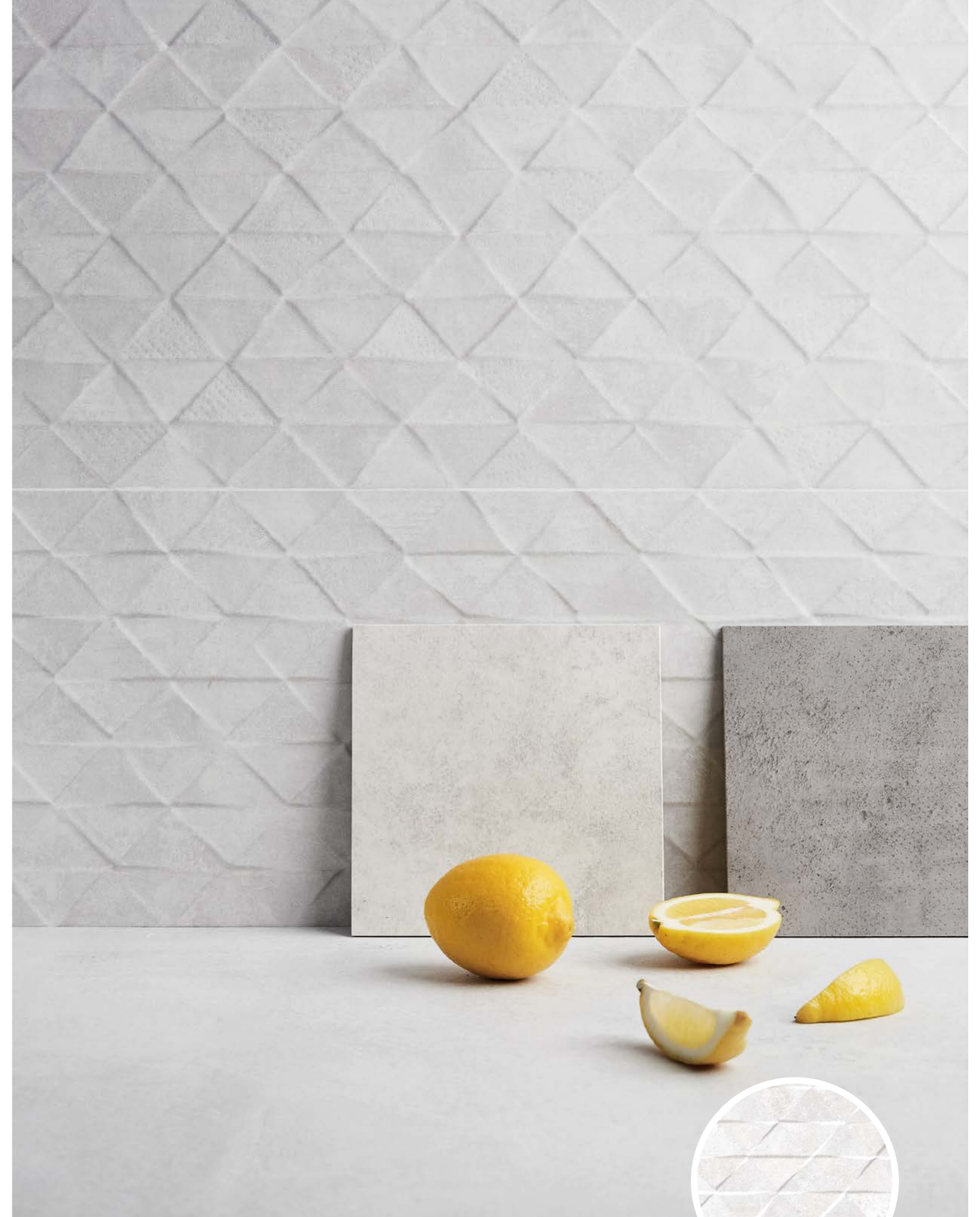
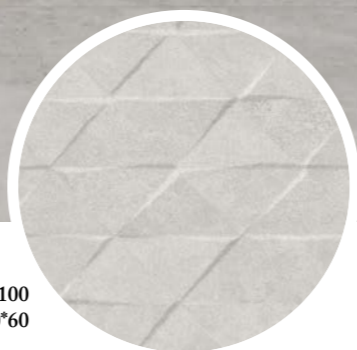
Downtown Material
 Beige_33,3*100



236

Downtown

Downtown Triangle Grey_33,3*100
 Downtown Grey_33,3*100
 Downtown Grey_60*60



237

Downtown Triangle White_33,3*100



Downtown

WHITE BODY TILES

DOWNTOWN
White



DOWNTOWN
Beige



DOWNTOWN
Grey



DOWNTOWN



14 patterns

33,3 * 100 * 0,7 cm | 13 * 39"

RECTIFIED	SHAPED
	BN8
BEIGE	29725
GREY	29724
WHITE	29723

DOWNTOWN
White Triangle



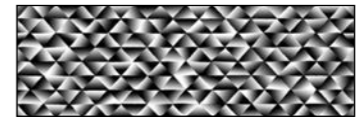
DOWNTOWN
Beige Triangle



DOWNTOWN
Grey Triangle



DOWNTOWN TRIANGLE



7 patterns

33,3 * 100 * 0,86 cm | 13 * 39"

RECTIFIED	SHAPED
	BN10
BEIGE	29727
GREY	29726
WHITE	29728

238

DOWNTOWN
White Material



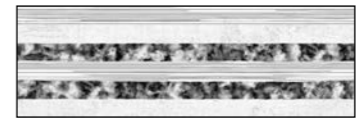
DOWNTOWN
Beige Material



DOWNTOWN
Grey Material



DOWNTOWN MATERIAL



7 patterns

33,3 * 100 * 0,86 cm | 13 * 39"

RECTIFIED	SHAPED
	BN10
BEIGE	30754
GREY	30756
WHITE	30755

239

MATCHING FLOOR COLLECTIONS

DOWNTOWN_PORCELAIN | Pag. 88

DOWNTOWN
White



DOWNTOWN
Beige



DOWNTOWN
Grey



DOWNTOWN
Anthracite



CARACTERÍSTICAS TÉCNICAS | TECHNICAL CHARACTERISTICS

joint	wall tiles	matt	diferent shades	shade variation	various graphics

DOWNTOWN



26 patterns

60 * 60 * 1 cm | 24 * 24"

RECTIFIED	NATURAL
	BN33
ANTHRACITE	29698
BEIGE	29700
GREY	29699
WHITE	29689

EMBALAJE | PACKING

(Los pesos aquí reflejados pueden sufrir ligeras variaciones en función del lote de producción. Weights shown here may slightly vary depending on the production lot.)

Formato Sizes	Cajas Boxes			Pallet				Cont./20' 21500 kg.	Cont./20' 24000 kg.
	Piezas	m2/ sq.m	kg	Cajas	m2/ sq.m	kg	Tamaño cm aprox.		
cm									
33,3 * 100 * 0,7	6	2	26,60	24	48	663	118 * 110 * 48	1556,56	1737,56
33,3 * 100 * 0,86	5	1,67	24	24	40,08	601	118 * 110 * 48	1544,30	1723,87
inch	units	ft2	lb	Boxes	ft2	lb	Sizes Inch approx.	ft2	ft2
13 1/8 * 39 3/8 * 1/4	6	21,53	58,65	24	516,67	1461,92	46 7/16 * 43 5/16 * 18 7/8	16754,82	18703,06
13 1/8 * 39 3/8 * 5/16	5	17,98	48,95	24	431,42	1230,39	46 7/16 * 43 5/16 * 18 7/8	16622,86	18555,75