

Yonoh is a design studio founded in 2006 by Clara del Portillo and Alex Selma, in Valencia, Spain. Uniting their creative inquisitiveness they create work on product graphic and interior design. Yonoh works on projects that differ for their simplicity and functionality, designs that exude freshness and uniqueness. During its career Yonoh has been awarded with the most prestigious design prizes worldwide as Red Dot, IF design award, Good Design or Wallpaper\* Design Award among others. Clara and Alex, industrial designer by training, developed their careers separately during years until they met on a young designers exhibition in 2004. At the end of 2006 they present their first collection as Yonoh, an ambigram that represents the bicephalus character of the studio. From 2014 they collaborate as associate teachers with the Cardenal Herrera CEU university in Valencia and give lectures and workshops around the world promoting the Yonoh way of work. In 2021, the studio celebrates its 15th anniversary, after receiving several awards throughout its history.

Yonoh es un estudio de diseño fundado en 2006 por Clara del Portillo y Alex Selma, en Valencia. Uniendo sus inquietudes creativas trabajan en diseño de producto, gráfico e interiorismo. Yonoh crea proyectos que se diferencian por su simplicidad y funcionalidad, diseños que respiran frescura y singularidad. Yonoh ha sido galardonado con los premios de diseño mas prestigiosos a nivel internacional, como el Red Dot, IF Design Award, Good Design o Wallpaper Design Award entre otros. Clara y Alex se formaron como diseñadores industriales con distintas trayectorias que confluyen en 2004 en una exposición de jóvenes diseñadores. A finales de 2006 presentan su primera colección como un único estudio, Yonoh, un ambigrama que hace referencia al carácter bicéfalo del estudio. Desde el año 2014 colaboran como profesores asociados en la universidad Cardenal Herrera CEU de Valencia además de recorrer el mundo dando charlas sobre la filosofía de trabajo del estudio. En 2021, Yonoh celebra su 15 aniversario tras recibir varios premios a lo largo de toda su trayectoria.

Alex Selma — Clara del Portillo



# LINS by YONOH



New colours have been added to LINS by YONOH. As with the collection's existing colours, Navy, Green and Bordeaux's crisscrossing lines and interplay with light transform wall surfaces into huge murals. Instead of taking advantage of lines on different levels, "LINS by YONOH" focuses on their subtle delicacy, using shadow play on the 20x20 cm tile surface to trigger ongoing volumetric effects.

LINS by YONOH presenta nuevas tonalidades para su colección. Navy, Green y Bordeaux generan composiciones que, junto con el resto de tonalidades, juega con la luz para conseguir un efecto visual a partir de cruces de líneas, creando composiciones con las que generar murales infinitos. LINS by YONOH apuesta por la sutileza de las líneas en lugar de profundizar en el desnivel, consiguiendo así que sea la propia delicadeza de las líneas las que hagan juegos de sombras que generan volúmenes infinitos en formato 20x20 cm.



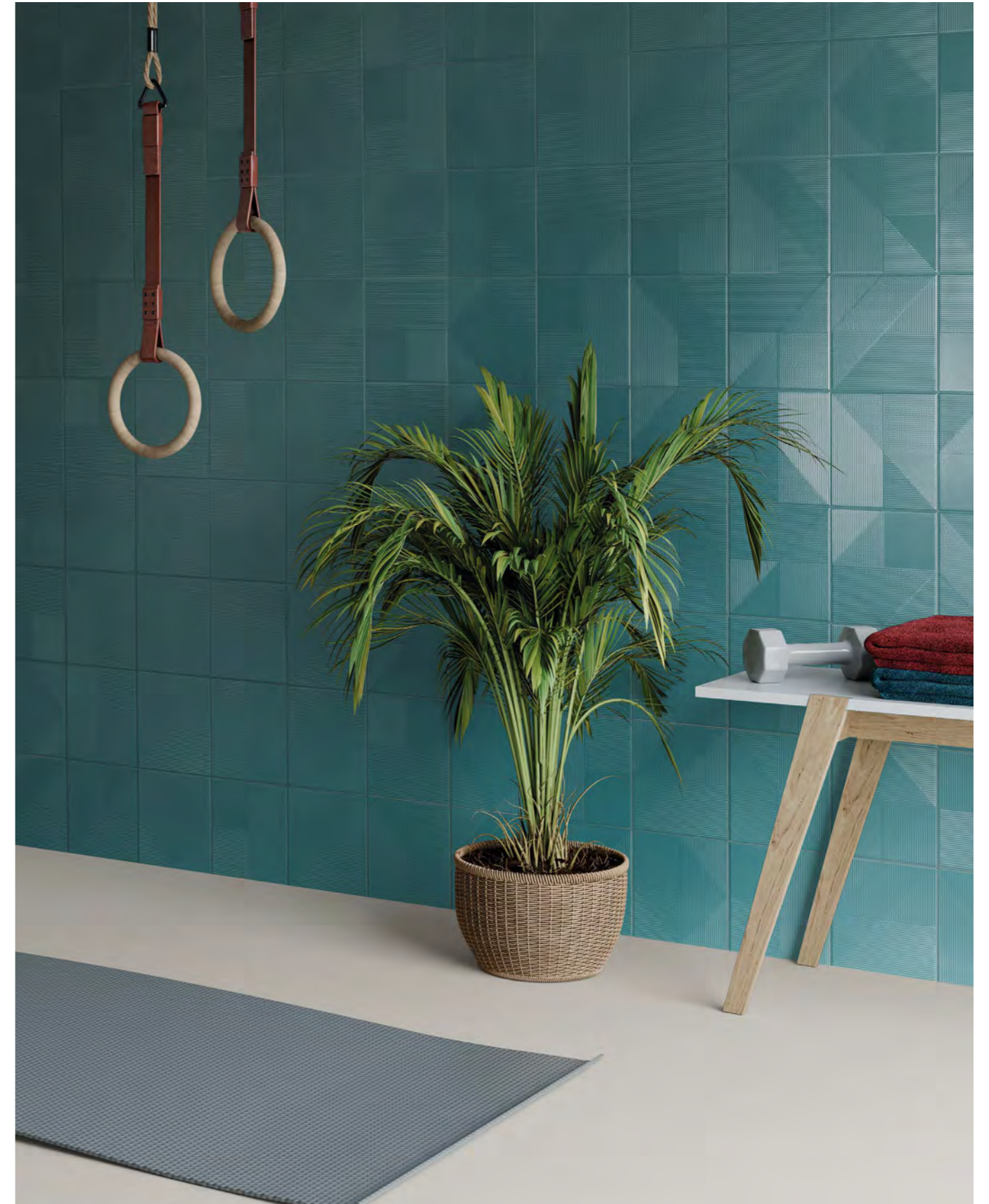
LINS NAVY

— white body

LINS by YONOH



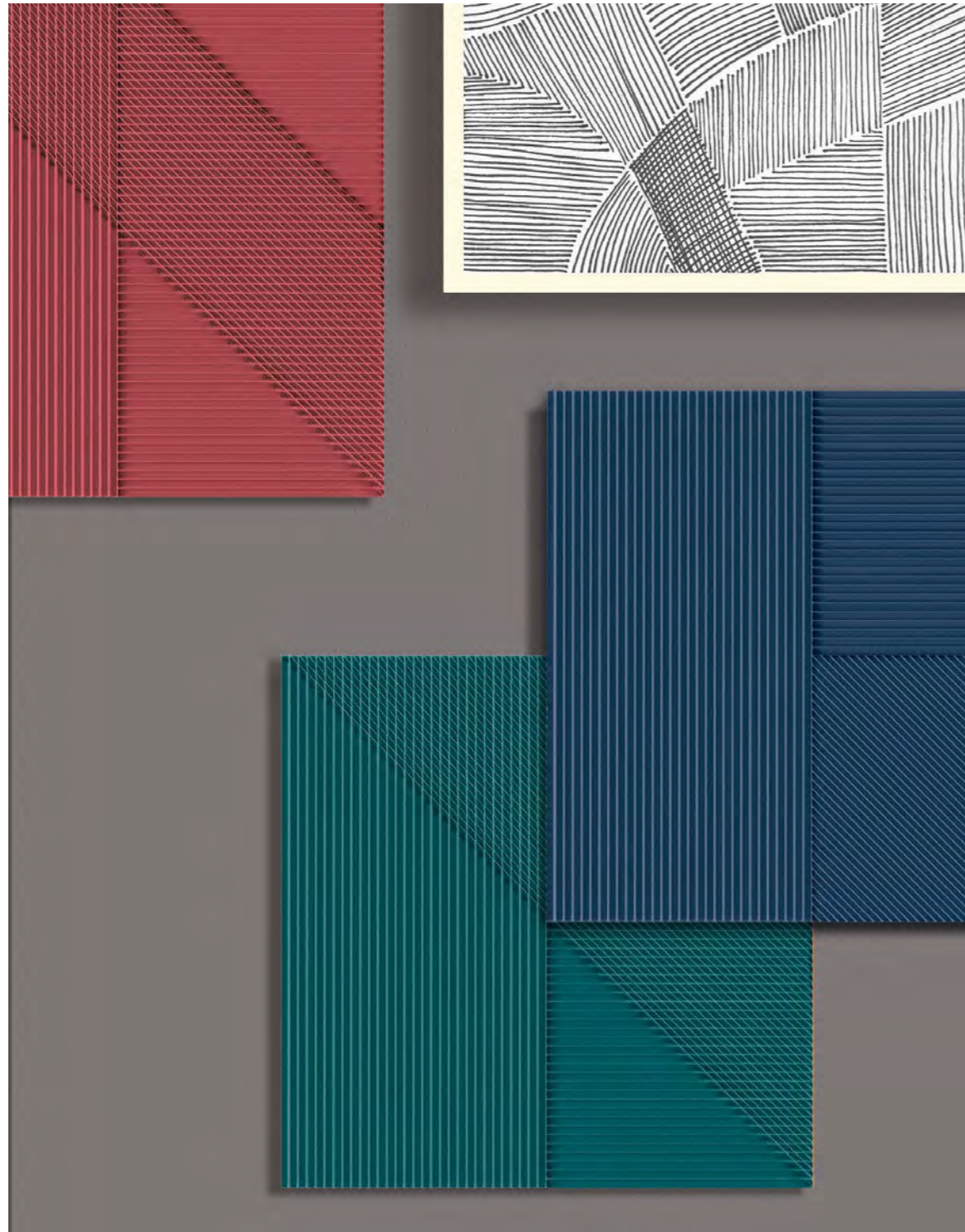
LINS BORDEAUX



LINS GREEN



# LINS by YONOH

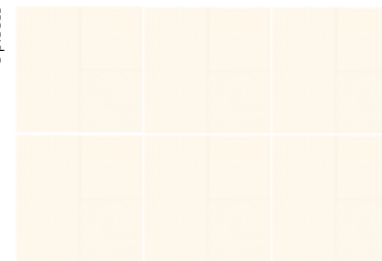


white body  
20x20

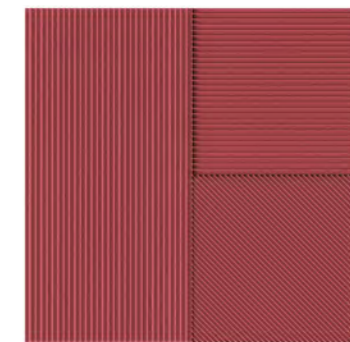


\*21716 LINS WHITE  
Q7 (20x20 cm - 77/8x77/8")  
4 patterns

6 pieces

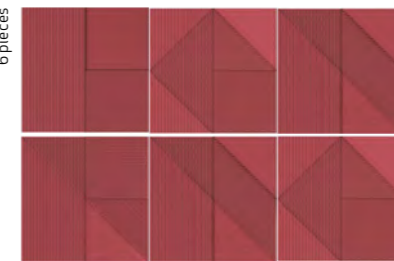


NEW  
COLOR

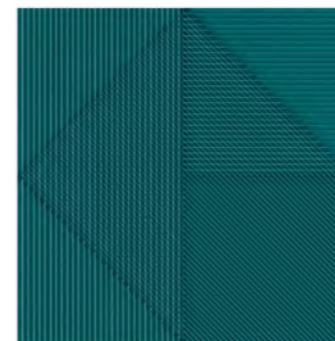


\*31688 LINS BORDEAUX  
Q7 (20x20 cm - 77/8x77/8")  
4 patterns

6 pieces



NEW  
COLOR

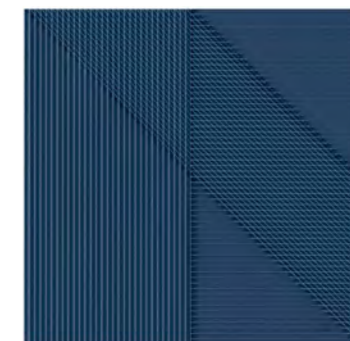


\*31687 LINS GREEN  
Q7 (20x20 cm - 77/8x77/8")  
4 patterns

6 pieces



NEW  
COLOR



\*31686 LINS NAVY  
Q7 (20x20 cm - 77/8x77/8")  
4 patterns

6 pieces



\* Random designs in box.  
\* Diseños aleatorios por caja.

## TECHNICAL CHARACTERISTICS



LINS

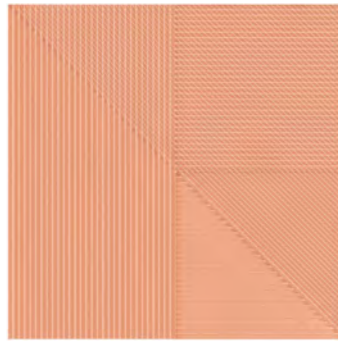
• | • | •

## PACKING

UNIT	m <sup>2</sup>	PIECES BOX	PIECES sq ft	PIECES BOX	m <sup>2</sup> BOX	sq ft BOX	WEIGHT BOX (kg)	WEIGHT BOX (lb)	BOXES PALLET	m <sup>2</sup> PALLET	sq ft PALLET	cm PALLET	THICKNESS (mm)	THICKNESS (inch)
PIECE														
	•	25	2.32	26	1.04	11.19	14.27	31.39	72	74.86	806	120x80x98	8	0.31

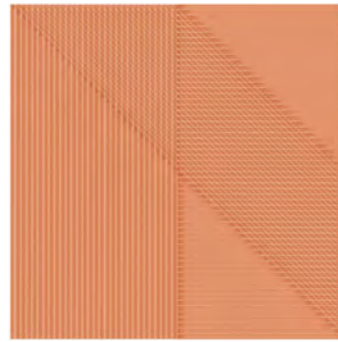
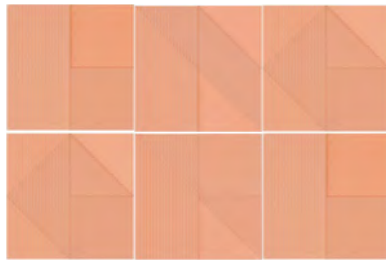
white body

LINS by YONOH



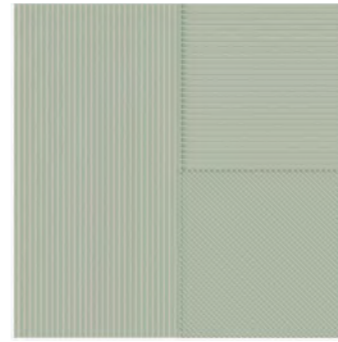
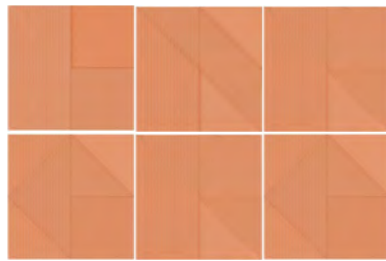
\*21023 LINS SUNSET  
Q7 (20x20 cm — 77/8x77/8")  
4 patterns

6 pieces



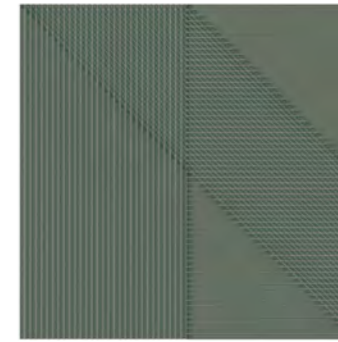
\*21024 LINS PUMPKIN  
Q7 (20x20 cm — 77/8x77/8")  
4 patterns

6 pieces



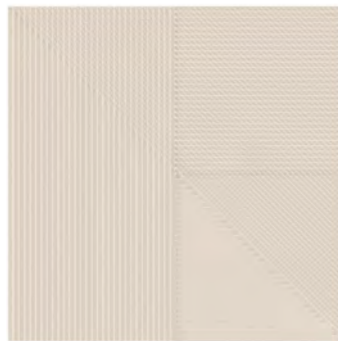
\*21022 LINS MINT  
Q7 (20x20 cm — 77/8x77/8")  
4 patterns

6 pieces



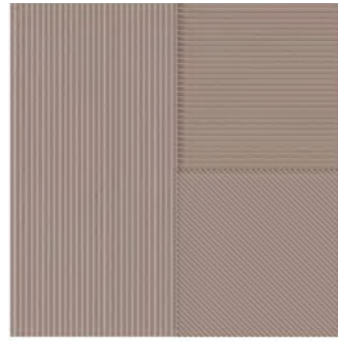
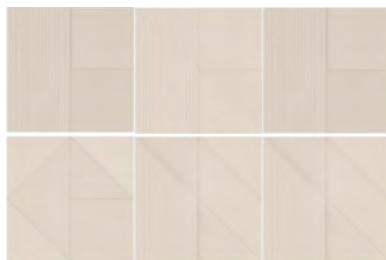
\*21021 LINS TEAL  
Q7 (20x20 cm — 77/8x77/8")  
4 patterns

6 pieces



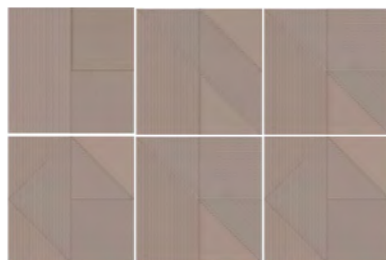
\*21020 LINS TAUPE  
Q7 (20x20 cm — 77/8x77/8")  
4 patterns

6 pieces



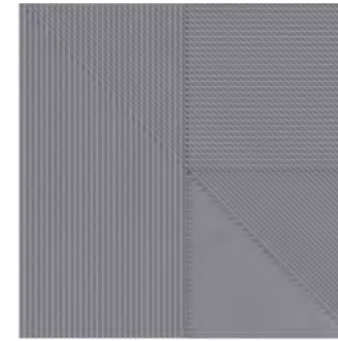
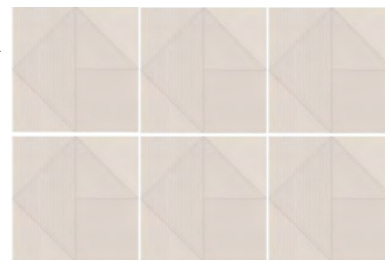
\*21019 LINS BROWN  
Q7 (20x20 cm — 77/8x77/8")  
4 patterns

6 pieces



\*21717 LINS MOONLIGHT  
Q7 (20x20 cm — 77/8x77/8")  
4 patterns

6 pieces



\*21718 LINS GREY  
Q7 (20x20 cm — 77/8x77/8")  
4 patterns

6 pieces



TECHNICAL CHARACTERISTICS

	MATT	GLOSS	SHADE VARIATION
LINS	•	•	•

PACKING

UNIT	m <sup>2</sup>	PIECES m <sup>2</sup>	PIECES sq ft	PIECES BOX	m <sup>2</sup> BOX	sq ft BOX	WEIGHT BOX (kg)	WEIGHT BOX (lb)	BOXES PALLET	m <sup>2</sup> PALLET	sq ft PALLET	cm PALLET	THICKNESS (mm)	THICKNESS (inch)
PIECE	0.04	25	2.72	26	1.04	11.19	14.27	31.39	72	74.88	806	120x80x96	6	0.31

\* Random designs in box.  
\* Diseños aleatorios por caja.

LINS by YONOH — white body