

# START

★★★★★  
**NAXOS**<sup>®</sup>  
CERAMICHE  
FINCIBEC GROUP



# START

RIVESTIMENTI IN PASTA BIANCA  
PAVIMENTI IN GRES FINE PORCELLANATO  
White body wall tiles - Porcelain stoneware floor tiles

## INDICE INDEX

02 | Ispirazione **Inspiration**

04 | 32,5x97,7 cm **12,8"x38,5"**

22 | 26x60,5 cm **10,2"x23,8"**



**32,5x97,7 cm** Rettificato/Rectified

Il formato ampio esalta lo spazio moltiplicando le potenzialità in fase progettuale.

The large size enhances the space by multiplying potential in the design phase.



Double

# ELEGANCE

Mischiare e combinare: giochi di stile, ovvero accostamenti di materiali diversi in un affascinante mix. Start è una collezione di rivestimenti in pasta bianca e pavimenti in gres porcellanato che unisce il mood minimal del cemento allo spirito caldo e naturale del legno. Per una totale armonia stilistica e progettuale.

Mix and match: a play on style or combinations of different materials in a fascinating mix. Start is a collection of white body wall tiles and porcelain stoneware flooring that combines the minimalist mood of cement with the spirit and warmth of natural wood. For total harmony of style and design.

**26x60,5 cm**

Versatile ed elegante, questo formato si adatta a ogni tipo di ambiente rispondendo a esigenze estetiche e funzionali.

Versatile and stylish, the size is suitable for any environment, meeting aesthetic and functional needs.

# Enlarge YOUR STYLE



32,5x97,7 cm

16,2x97,7 cm

## Wide attitude

Il grande formato rettificato 32,5 x 97,7 cm apre nuove prospettive progettuali e dal forte impatto visivo in scenari metropolitani ampi e luminosi.

### WIDE ATTITUDE

The large 32.5 x 97.7 rectified size is ideal for creating new design perspectives with strong visual impact in spacious and bright metropolitan contexts.

## Urban grace

La palette di tonalità delicate e avvolgenti si rivela un prezioso elemento scenografico: la superficie si veste di tinte pure e profonde per dare vita a spazi urban chic.

### URBAN GRACE

The palette of soft and warm tones becomes a precious element of the surroundings: surfaces are dressed in pure and deep hues creating chic urban spaces.

## Decor trend

Decorazioni che richiamano le antiche maioliche e che evocano la tradizione ceramica si incontrano in superfici tutte da personalizzare con elegante creatività.

### DECOR TREND

Decorations that bring ancient majolica to mind and evoke ceramic tradition meet surfaces to personalise with elegant creativity.







Celebrity  
**STYLE**

Ambiente realizzato con | Setting realized with: White Clay 32,5x97,7 cm - Concrete 32,5x97,7 cm  
Groove White Clay 32,5x97,7 cm - White Clay spaccatella 30x30 cm - Create Nut pav 32,5x32,5 cm - Concrete pav 60x60 cm



Sopra | Above: Concrete 32,5x97,7 cm -  
White Clay spaccatella 30x30 cm - Create Nut pav 32,5x32,5 cm  
A destra | On the left: White Clay 32,5x97,7 cm - Groove White Clay 32,5x97,7 cm







Absolute  
**RELAX**

Ambiente realizzato con | Setting realized with: White Clay 32,5x97,7 cm  
Create Nut 32,5x97,7 cm – Fascia Create Shine 32,5x97,7 cm - Concrete pav 60x60 cm





# Dream ELEGANCE

Ambiente realizzato con | Setting realized with: Plaster 32,5x97,7 cm - Tavella Taupe 16,2x97,7 cm  
Metropolis 32,5x97,7 cm - Metropolis pav 32,5x32,5 cm - Taupe pav 60x60 cm





Sopra | Above: Metropolis pav 32,5x32,5 cm  
A destra: | On the right: Metropolis 32,5x97,7 cm







Contemporary  
**COOL**

Ambiente realizzato con | Setting realized with: Plaster 32,5x97,7 cm - Tavella Taupe 16,2x97,7 cm  
Fascia Teser Taupe 32,5x97,7 cm - Spaccatella Taupe 30x30 cm - Taupe pav 60x60 cm





Remodel  
**DESIGN**

Ambiente realizzato con | Setting realized with:  
Superior 32,5x97,7 cm - Concrete pav 60x60 cm



# START 32,5x97,7 cm



## Rivestimenti in pasta bianca rettificati White body wall tiles rectified

## Rivestimenti in pasta bianca rettificati White body wall tiles rectified



32,5x97,7 ■ 175  
81142 PLASTER



16,2x97,7 ■ 192  
82030 TAVELLA PLASTER



30x30 ● 111  
82036 SPACCATELLA PLASTER



32,5x97,7 ■ 175  
81239 WHITE CLAY



16,2x97,7 ■ 192  
81253 TAVELLA WHITE CLAY



30x30 ● 111  
81259 SPACCATELLA WHITE CLAY



32,5x97,7 ■ 190  
81245 GROOVE PLASTER



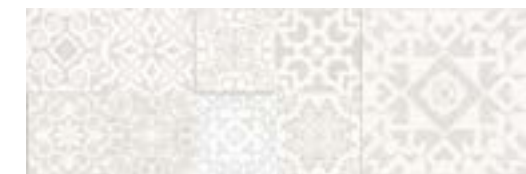
32,5x97,7 ■ 190  
79763 CREATE NUT



32,5x97,7 ■ 190  
79765 METROPOLIS



32,5x97,7 ■ 190  
81244 GROOVE WHITE CLAY



32,5x97,7 ■ 190  
79762 CREATE LIGHT



32,5x97,7 ■ 188  
81243 SUPERIOR



32,5x97,7 ■ 180  
81241 TAUPE



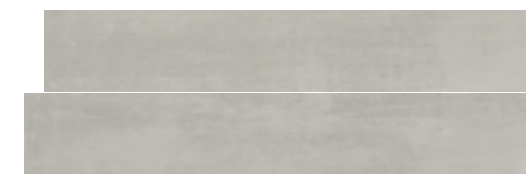
16,2x97,7 ■ 192  
81162 TAVELLA TAUPE



30x30 ● 111  
81145 SPACCATELLA TAUPE



32,5x97,7 ■ 180  
81240 CONCRETE



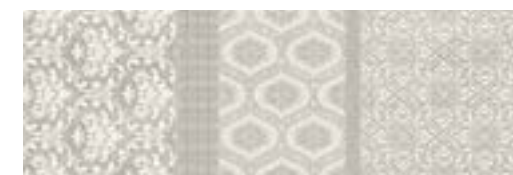
16,2x97,7 ■ 192  
81251 TAVELLA CONCRETE



30x30 ● 111  
81257 SPACCATELLA CONCRETE



32,5x97,7 ● 197  
81246 FASCIA TESER TAUPE



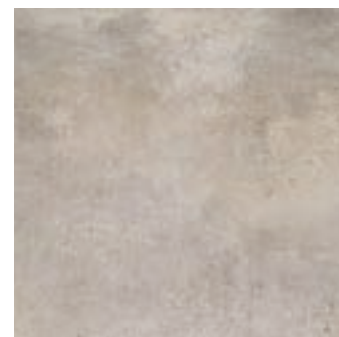
32,5x97,7 ● 197  
81247 FASCIA TESER CONCRETE



32,5x97,7 ● 195  
81151 FASCIA CREATE SHINE

## Pavimenti in gres porcellanato Porcelain stoneware floor tiles

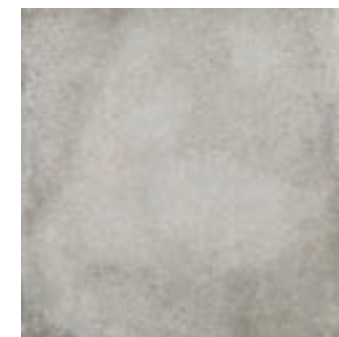
## Pavimenti in gres porcellanato Porcelain stoneware floor tiles



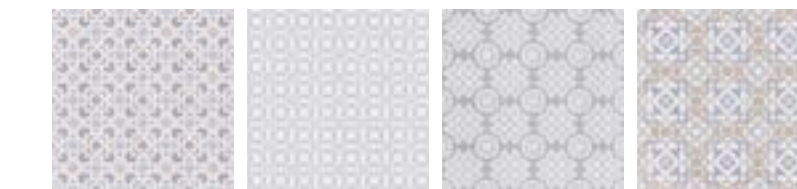
60x60 ■ 103  
81134 TAUPE PAV.



32,5x32,5 ■ 119  
81136 METROPOLIS PAV. RETT.



60x60 ■ 103  
81135 CONCRETE PAV.



32,5x32,5 ■ 119  
81137 CREATE NUT PAV. RETT.



# Pretty COMPOSITIONS



Plaster

Allwood Beige

Taupe

White Clay

Allwood Grey

Concrete

26x60,5 cm

13x60,5 cm



## Free vogue

Il formato 26x60,5 cm consente di creare composizioni di forme e cromie diverse, ravvivando la progettazione per spazi di qualsiasi dimensione.

**FREE VOGUE**  
The 26x60.5 cm size allows for the creation of compositions of different shapes and colours, reviving design for spaces of any dimension.

## Colour notes

Tonalità rigorose e contemporanee si alternano alle sfumature più avvolgenti e rilassanti del legno, per nuance che diventano melodie di colore e design.

**COLOUR NOTES**  
Rigorous and contemporary tones alternate with the relaxing shades of wood, to create nuances that become melodies of colour and design.

## New traditions

Sulla superficie rivivono decori rubati alla tradizione da abbinare a disegni attuali per creare dolci contaminazioni stilistiche e cromatiche.

**NEW TRADITIONS**  
Decorations stolen from tradition are revived on surfaces, combined with current designs to create gentle stylistic and chromatic mixes.





Leafy  
**WELLNESS**

Ambiente realizzato con | Setting realized with: White Clay 26x60,5 cm - Concrete 26x60,5 cm  
Tavella Concrete 13x60,5 cm - Concrete 3d 26x60,5 cm - Concrete pav 60x60 cm





**Sopra | Above:** Concrete 26x60,5 cm - Concrete 3d 26x60,5 cm  
Concrete pav 60x60 cm  
**A sinistra | On the left:** White Clay 26x60,5 cm





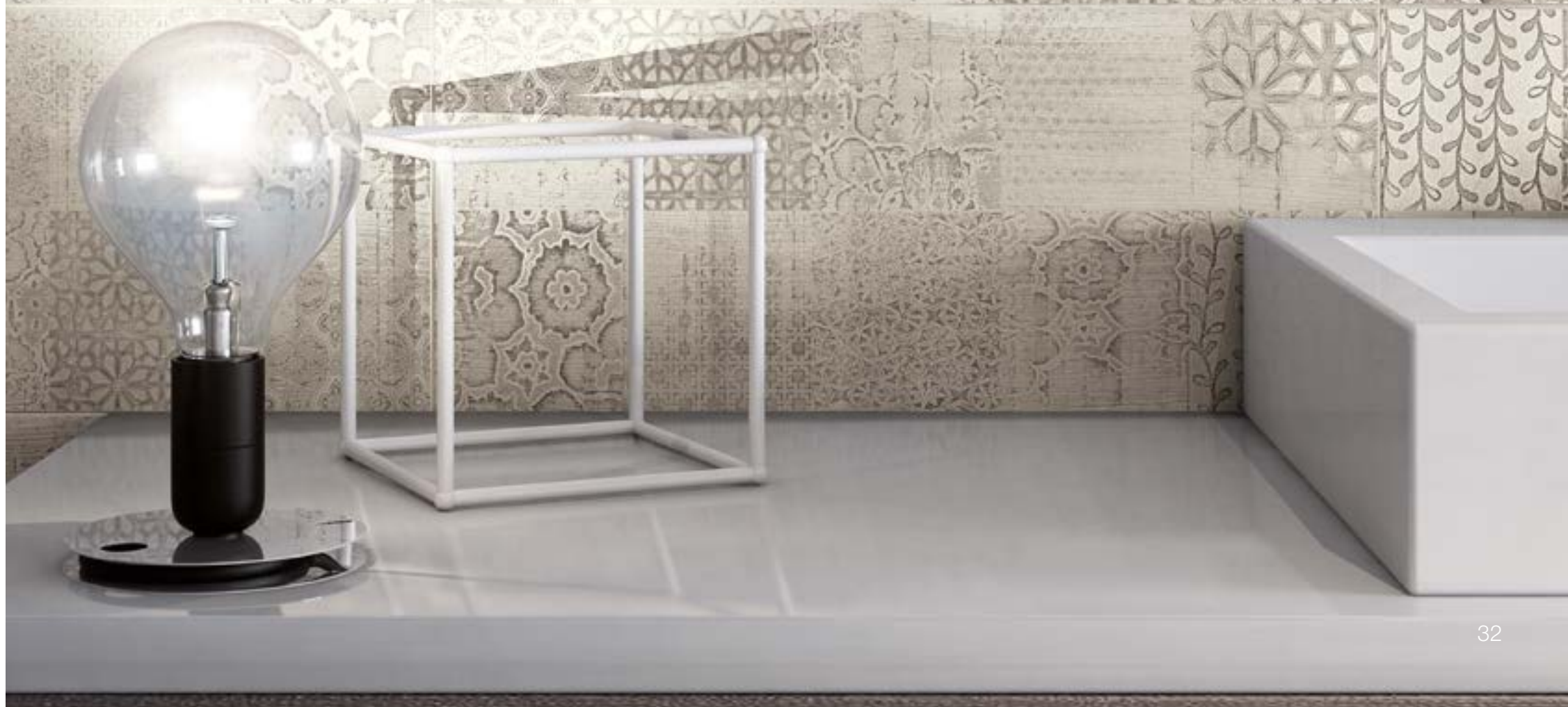
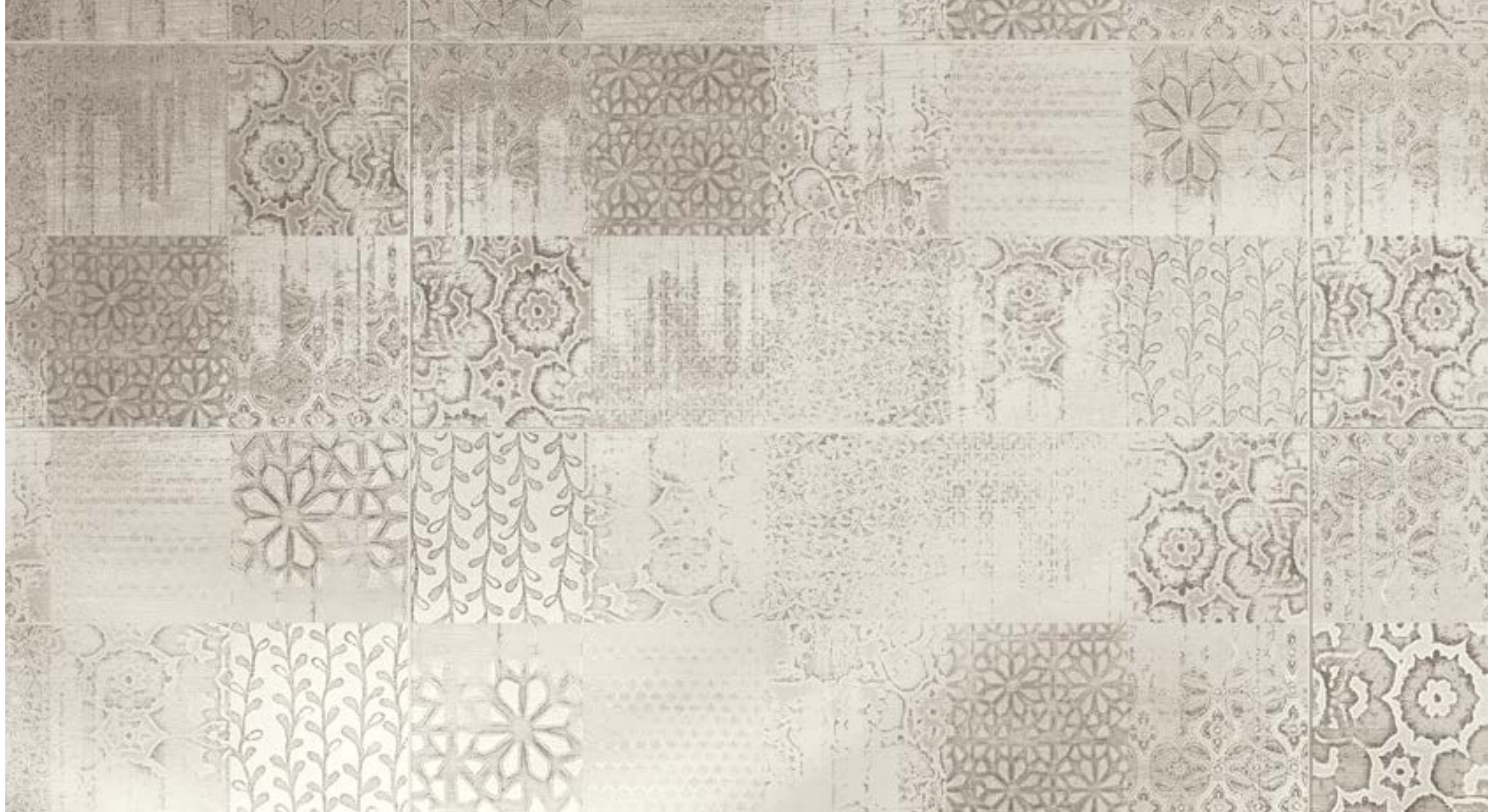
# Original DECORATION

Ambiente realizzato con | Setting realized with: Concrete 26x60,5 cm  
Tavella Allwood Grey 13x60,5 - Fascia Tebriz Concrete 26x60,5 cm - Concrete pav 60x60 cm





Sopra | Above: Tavella Allwood Grey 13x60,5 - Concrete pav 60x60 cm  
A destra | On the left: Fascia Tebriz Concrete 26x60,5 cm







Pure  
**PLEASURE**

Ambiente realizzato con | Setting realized with: Plaster 26x60,5 cm - Tavella Taupe 13x60,5 cm  
Allwood Beige 26x60,5 cm - Mosaico Raw Allwood Beige 26x30 cm - Taupe pav 60x60 cm





Sopra | Above: Allwood Beige 26x60,5 cm - Mosaico Raw Allwood Beige 26x30 cm  
A sinistra | On the left: Plaster 26x60,5 cm





Fashionable  
**TONALITY**

Ambiente realizzato con | Setting realized with: Plaster 26x60,5 cm - Tavella Plaster 13x60,5 cm - Taupe 26x60,5 cm  
Tavella Taupe 13x60,5 cm - Listello Skema Plaster 13x60,5 cm - Mosaico Raw Plaster 26x30 cm - Taupe pav 60x60 cm





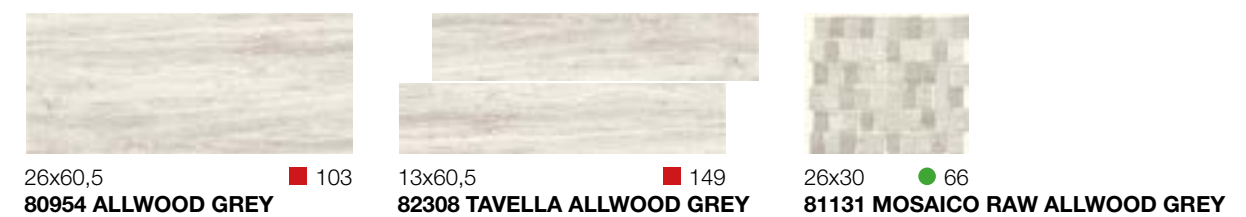
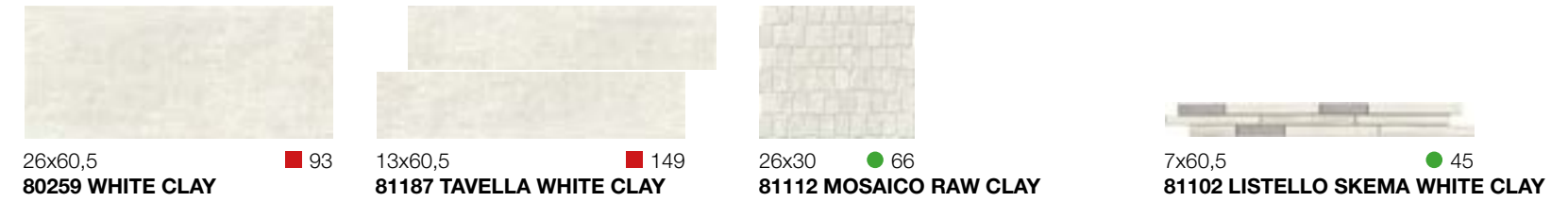
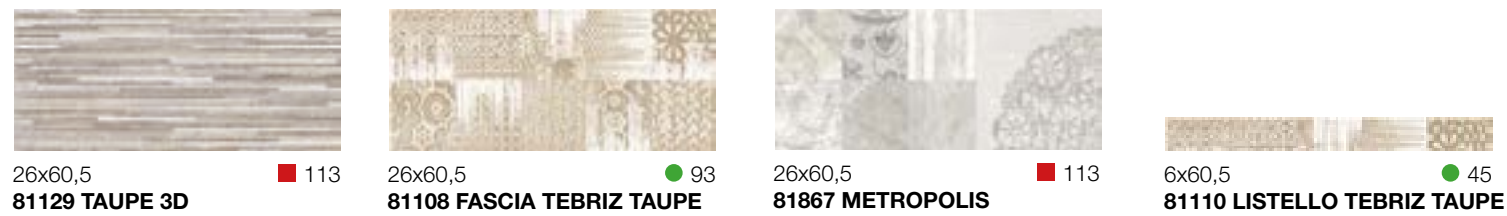
Get  
**INSPIRED**

Ambiente realizzato con | Setting realized with: Taupe 3d 26x60,5 cm

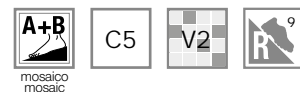
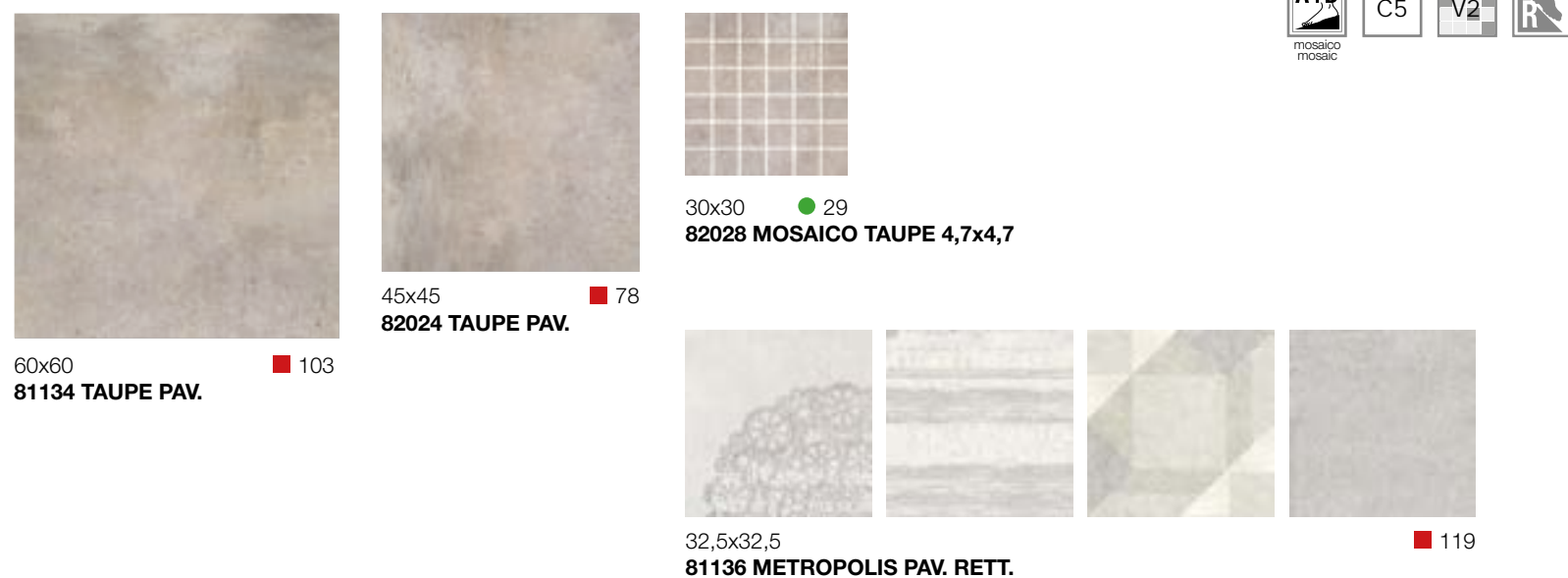


# START 26x60,5 cm

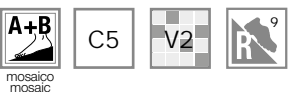
## Rivestimenti in pasta bianca White body wall tiles



## Pavimenti in gres porcellanato Porcelain stoneware floor tiles



## Pavimenti in gres porcellanato Porcelain stoneware floor tiles



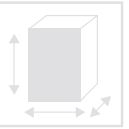










## CARATTERISTICHE TECNICHE

Technical data  
Caractéristiques techniques  
Technische Daten  
Características técnicas



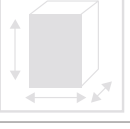







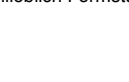
Rivestimenti in pasta bianca // White body and double fired wall tiles // Revêtements en pâte blanche  
Weißscherbige Wand - und Bodenfliesen // Revestimientos en pasta blanca

 ISO 13006BIII EN 14411/L	<b>Caratteristiche tecniche</b> Technical data Caractéristiques techniques Technische Daten Características técnicas	<b>Tipo di prova</b> Standard of test Norme du test Testnorm Tipo de prueba 	<b>Valore Naxos</b> Naxos standards Valeur Naxos Ergebnis Naxos Valor de Naxos
	<b>Dimensioni</b> Sizes Dimensions Abmessungen Dimensiones	<b>ISO 10545.2</b>	<b>A norma</b> According to norm Selon la norme Nach Norm Conforme
	<b>Assorbimento d'acqua</b> Water absorption Absorption d'eau Wasseraufnahme Absorción del agua	<b>ISO 10545.3</b>	<b>&gt; 10%</b>
	<b>Resistenza a flessione</b> Breaking strength Resistance a la flexion Biegefestigkeit Resistencia a la flexión	<b>ISO 10545.4</b>	<b>spessore ≥ 7,5 mm</b> thickness - epaisseur - stärke - espesor ≥ 12 N/mm <sup>2</sup> <b>spessore &lt; 7,5 mm</b> thickness - epaisseur - stärke - espesor ≥ 15 N/mm <sup>2</sup>
	<b>Coefficiente di dilatazione termica lineare</b> Thermal expansion coefficient Coefficient de dilatation thermique lineare Wärmeausdehnungskoeffizient Coeficiente de dilatación termica linear	<b>ISO 10545.8</b>	<b>A norma</b> According to norm Selon la norme Nach Norm Conforme
	<b>Resistenza al cavillo</b> Crazing resistance Resistance à la craquelure Widerstand gegen haarriss Resistencia al cuarteado	<b>ISO 10545.11</b>	<b>Garantita</b> Guaranteed Garantie Garantiert Garantizada
	<b>Resistenza all'attacco chimico</b> Chemical resistance Resistance chimique Beständigkeit gegen Chemicalien Resistencia al ataque químico	<b>ISO 10545.13</b>	<b>A norma</b> According to norm Selon la norme Nach Norm Conforme
	<b>Resistenza alle macchie</b> Stains resistance Resistance aux taches Fleckenbeständigkeit Resistencia a las manchas	<b>ISO 10545.14</b>	<b>A norma</b> According to norm Selon la norme Nach Norm Conforme

## CARATTERISTICHE TECNICHE

Technical data  
Caractéristiques techniques  
Technische Daten  
Características técnicas

Pavimenti in gres fine porcellanato // Fine porcelain stoneware floor tiles // Sols en grès cérame fin Feinsteinzeug Bodenfliesen //  
Pavimentos en gres fine porcelánico

 ISO 13006BIIa EN 14411/G	<b>Caratteristiche tecniche</b> Technical data Caractéristiques techniques Technische Daten Características técnicas	<b>Tipo di prova</b> Standard of test Norme du test Testnorm Tipo de prueba 	<b>Valore Naxos</b> Naxos standards Valeur Naxos Ergebnis Naxos Valor de Naxos
	<b>Dimensioni</b> Sizes Dimensions Abmessungen Dimensiones	<b>ISO 10545.2</b>	<b>A norma</b> According to norm Selon la norme Nach Norm Conforme
	<b>Assorbimento d'acqua</b> Water absorption Absorption d'eau Wasseraufnahme Absorción del agua	<b>ISO 10545.3</b>	<b>≤ 0,5%</b>
	<b>Resistenza a flessione</b> Breaking strength Resistance a la flexion Biegefestigkeit Resistencia a la flexión	<b>ISO 10545.4</b>	<b>≥ 35 N/mm<sup>2</sup></b>
	<b>Resistenza agli shock termici</b> Resistance to thermal shock Resistance aux chocs thermique Temperaturwechselbeständigkeit Resistencia a los cambios térmicos	<b>ISO 10545.9</b>	<b>Garantita</b> Guaranteed Garantie Garantiert Garantizada
	<b>Resistenza al gelo</b> Frost resistance Resistance au gel Frostbeständigkeit Resistencia a la helada	<b>ISO 10545.12</b>	<b>Garantita</b> Guaranteed Garantie Garantiert Garantizada
	<b>Coefficiente di dilatazione termica lineare</b> Thermal expansion coefficient Coefficient de dilatation thermique lineare Wärmeausdehnungskoeffizient Coeficiente de dilatación termica linear	<b>ISO 10545.8</b>	<b>A norma</b> According to norm Selon la norme Nach Norm Conforme
	<b>Resistenza all'attacco chimico</b> Chemical resistance Resistance chimique Beständigkeit gegen Chemicalien Resistencia al ataque químico	<b>ISO 10545.13</b>	<b>A norma</b> According to norm Selon la norme Nach Norm Conforme
	<b>Resistenza alle macchie</b> Stains resistance Resistance aux taches Fleckenbeständigkeit Resistencia a las manchas	<b>ISO 10545.14</b>	<b>A norma</b> According to norm Selon la norme Nach Norm Conforme
	<b>Resistenza allo scivolamento</b> Slip Resistance Resistance au glissement Rutschfestigkeit Resistencia al deslizamiento Per ulteriori informazioni: <a href="http://www.naxos-ceramica.it">www.naxos-ceramica.it</a> For more information visit: <a href="http://www.naxos-ceramica.it">www.naxos-ceramica.it</a>	<b>DIN 51130</b> <b>DIN 51097</b>	<b>R9</b> <b>A+B (MOSAICO/MOSAIC)</b>

Escluso pezzi speciali ed elementi decorativi  
With the exception of special pieces and decors | A l'exception de pièces spéciales et éléments décoratifs  
Ausschließlich Formstücke und Dekorteile | Excluido piezas especiales y elementos decorativos


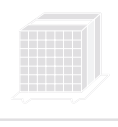


# START


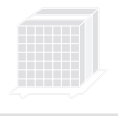
## PESI E IMBALLI

Weights and packaging  
Poids et emballages  
Gewicht und Verpackung  
Pesos y embalajes

Rivestimenti in pasta bianca // White body and double fired wall tiles // Revêtements en pâte blanche  
Weißscherbige Wand - und Bodenfliesen // Revestimientos en pasta blanca

32,5X97,7		32,5X97,7	16,2X97,7	32,5X97,7 FASCIA	30X30 SPACCATELLA	60X60 PAV	32,5X32,5 PAV	
	<b>Pc.</b>	3	6	2	5	3	11	
	<b>m²</b>	0,953	0,953	0,635	0,45	1,08	1,16	
	<b>Kg</b>	20,1	20,1	13,4	7,26	22,5	20,1	
	<b>Colli/Boxes</b>	48	20	-	-	40	52	
	<b>m²</b>	45,744	19,06	-	-	43,2	60,32	
	<b>Kg</b>	964,8	402	-	-	900	1045,2	

26X60,5		26X60,5	13X60,5	30X30 MOSAICO	45X45 PAV	26X30 MOSAICO	26X60,5 FASCIA	6X60,5	7X60,5
	<b>Pc.</b>	8	16	11	6	5	2	4	4
	<b>m²</b>	1,26	1,26	0,99	1,215	0,39	0,3146	0,1452	0,1692
	<b>Kg</b>	20,3	20,3	17	22	6,345	5,076	2,5	3,384
	<b>Colli/Boxes</b>	48	20	36	56	-	-	-	-
	<b>m²</b>	60,48	25,2	35,64	68,04	-	-	-	-
	<b>Kg</b>	974,4	406	612	1232	-	-	-	-

# START

RIVESTIMENTI IN PASTA BIANCA  
PAVIMENTI IN GRES FINE PORCELLANATO  
White body wall tiles - Porcelain stoneware floor tiles

### Categorie d'impiego Use classes

C1

**Piastrelle da pavimento consigliate per traffico leggero**  
Floor tiles recommended for light traffic



C2

**Piastrelle da pavimento consigliate per traffico medio-leggero**  
Floor tiles recommended for medium-light traffic



C3

**Piastrelle da pavimento consigliate per traffico medio**  
Floor tiles recommended for medium traffic



C4

**Piastrelle da pavimento consigliate per traffico medio-pesante**  
Floor tiles recommended for medium-heavy traffic



C5

**Piastrelle da pavimento consigliate per impieghi con forti sollecitazioni**  
Floor tiles recommended for highly stresses uses

### Variazioni cromatiche Colour variations

**V1 Aspetto uniforme**  
Even appearance

Le tonalità dei colori riportate nel catalogo sono indicative.  
The colours shades, reported on the catalogue are indicative.

**V2 Lieve variazione**  
Light variation

**V3 Media variazione**  
Medium variation

**V4 Intensa variazione**  
Strong variation



★ ★ ★ ★ ★  
**NAXOS**<sup>®</sup>  
 C E R A M I C H E  
 FINCIBEC GROUP



FINCIBEC S.P.A

**Uffici Comm.li, Stabilimento:**

Strada Statale 569, 169  
 41014 Solignano (MO) Italy  
 Tel. +39 059.748811  
 Fax Export +39 059.797376  
 Fax Italia +39 059.748841  
 www.naxos-ceramica.it  
 info@naxos-ceramica.it

**Magazzino:**

Strada Statale 569, 187  
 41014 Solignano (MO) Italy

**Amministrazione:**

Via Valle D'Aosta, 47  
 41049 Sassuolo (MO) Italy  
 Tel. +39 0536.861300  
 Fax +39 0536.861351  
 www.fincibec.it  
 info@fincibec.it

GRUPPO FIRE – Fire S.r.l



CERTIFICATO N. EDIL.2009\_012

FINCIBEC S.p.A.

EN 14411