

Foussana

design

Giovanni Barbieri





Foussana

Foussana. Design moderno,
eleganza, stile all'avanguardia.
Un arredo minimal e dinamico
che non rinuncia al comfort.

Foussana. Modern design,
elegance, avant-garde style. A minimal
and dynamic fitment that does not
disclaim to comfort.

Foussana. Современный дизайн,
элегантность, передовой стиль. Минимализм
и динамизм в интерьере в
сочетании с комфортом.



Foussana

Unicità. Lievi variazioni cromatiche e i sottili rilievi della pietra. Ideali per qualsiasi ambiente.

Uniqueness. Slight chromatic variations and slender heights of the stone. Ideal for any environment.

Уникальность. Незначительные хроматические отличия и тонкие рельефы камня. Эта серия идеально подходит для любого интерьера.



Foussana

Varietà. Numerosi formati,
ampia scelta di tonalità e decorazioni.
Per un rivestimento di
carattere e dall'impatto immediato.

Assortment. Different sizes,
wide selection of shades and decorations.
For wall tiles of character
and immediate impact.

Разнообразие. Многообразие форматов,
большой выбор оттенков и декоров. Для
интерьерных решений, поражающих и
изумляющих, со своим характером.

GRAY



Foussana Gray 45x90 - 17,7"x35,4"
60x60 - 23,6"x23,6"
30x60 - 11,8"x23,6"

GRAY



Foussana Gray 60x60 - 23,6"x23,6" - River 45x90 - 17,7"x35,4"





Foussana Sand 45x90 - 17,7"x35,4"

SAND



Foussana Sand 60x60 - 23,6"x23,6" - 45x90 - 17,7"x35,4" - 7,5x30 - 2,9"x11,8"
Ambra 60x60 - 23,6"x23,6" - Bacchetta Cromo 1,5x90 - 0,6"x35,4"





Foussana Sand 60x60 - 23,6"x23,6"
45x90 - 17,7"x35,4"
Ambra 60x60 - 23,6"x23,6"

MUD



Foussana Mud 60x60 - 23,6"x23,6"
Ambra 60x60 - 23,6"x23,6"



Foussana Mud 7,5x30 - 2,9"x11,8"
Foussana Mosaico 30x30 - 11,8"x11,8"





G2080A FOUSSANA GRAY LAPP. RETT. 67
20x20 - 7,9"x7,9"



G2067A FOUSSANA GRAY LAPP. RETT. 20x60 - 7,9"x23,6" 47



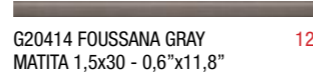
G2046A FOUSSANA GRAY LAPP. RETT. 30x60 - 11,8"x23,6" 64



G2044A FOUSSANA GRAY LAPP. RETT. 60x60 - 23,6"x23,6" 65



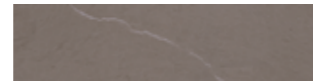
G30154 FOUSSANA GRAY BATTISCOPA 8x60 - 3,1"x23,6" 16



G20414 FOUSSANA GRAY
MATITA 1,5x30 - 0,6"x11,8" 12



G20416 FOUSSANA GRAY
TORELLO 3,5x30 - 1,4"x11,8" 21



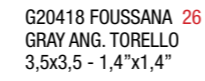
G2055A FOUSSANA GRAY LAPP. RETT. 67
7,5x30 - 2,9"x11,8"



G2064A FOUSSANA GRAY LAPP. RETT. 64
30x30 - 11,8"x11,8"



G2049A FOUSSANA GRAY LAPP. RETT. 45x90 - 17,7"x35,4" 66



G20418 FOUSSANA
GRAY ANG. TORELLO
3,5x3,5 - 1,4"x1,4" 26



G20423 FOUSSANA GRAY
COPRIFILO 1,5x30 - 0,6"x11,8" 17



G30801 BACCHETTA ALLUMINIO
1,5x90 - 0,6"x35,4" 19



G30802 BACCHETTA CROMO
1,5x90 - 0,6"x35,4" 19



G2053A FOUSSANA GRAY RIVER LAPP. RETT. 45x90 - 17,7"x35,4" 66



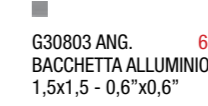
G0201A FOUSSANA GRAY AMBRA RETT. 60x60 - 23,6"x23,6" 65



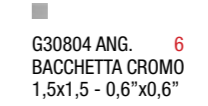
G20420 FOUSSANA GRAY
MOSAICO 30x30 (tozz. 5x5) 11,8"x11,8" 13



G30156 FOUSSANA GRAY
MOSAICO 30x30 (tozz. 6x6) 11,8"x11,8" 29

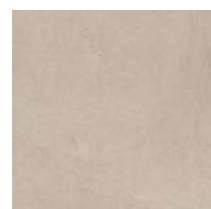


G30803 ANG.
BACCHETTA ALLUMINIO
1,5x1,5 - 0,6"x0,6" 6

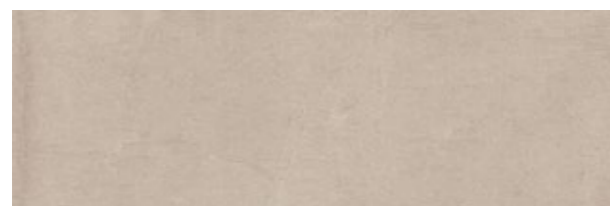


G30804 ANG.
BACCHETTA CROMO
1,5x1,5 - 0,6"x0,6" 6

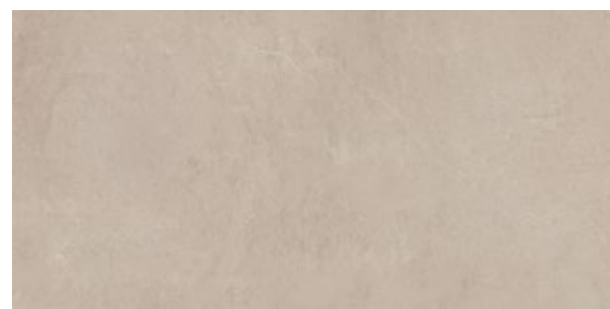
SAND



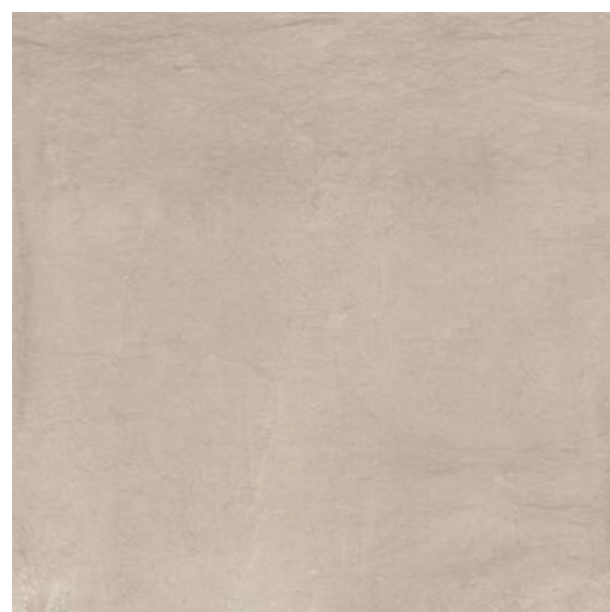
G2079A FOUSSANA SAND LAPP. RETT. 67
20x20 - 7,9"x7,9"



G2068A FOUSSANA SAND LAPP. RETT. 20x60 - 7,9"x23,6" 47



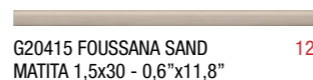
G2045A FOUSSANA SAND LAPP. RETT. 30x60 - 11,8"x23,6" 64



G2043A FOUSSANA SAND LAPP. RETT. 60x60 - 23,6"x23,6" 65



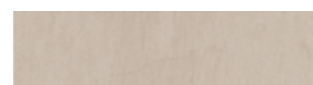
G30155 FOUSSANA SAND BATTISCOPIA 8x60 - 3,1"x23,6" 16



G20415 FOUSSANA SAND MATITA 1,5x30 - 0,6"x11,8" 12



G20417 FOUSSANA SAND TORELLO 3,5x30 - 1,4"x11,8" 21



G2056A FOUSSANA SAND LAPP. RETT. 67
7,5x30 - 2,9"x11,8"



G2065A FOUSSANA SAND LAPP. RETT. 64
30x30 - 11,8"x11,8"



G2052A FOUSSANA SAND LAPP. RETT. 45x90 - 17,7"x35,4" 66

G20422 FOUSSANA SAND ANG. TORELLO 3,5x3,5 - 1,4"x1,4" 26



G20424 FOUSSANA SAND COPRIFILO 1,5x30 - 0,6"x11,8" 17



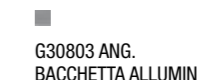
G30801 BACCHETTA ALLUMINIO 1,5x90 - 0,6"x35,4" 19



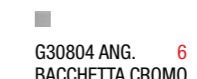
G30802 BACCHETTA CROMO 1,5x90 - 0,6"x35,4" 19



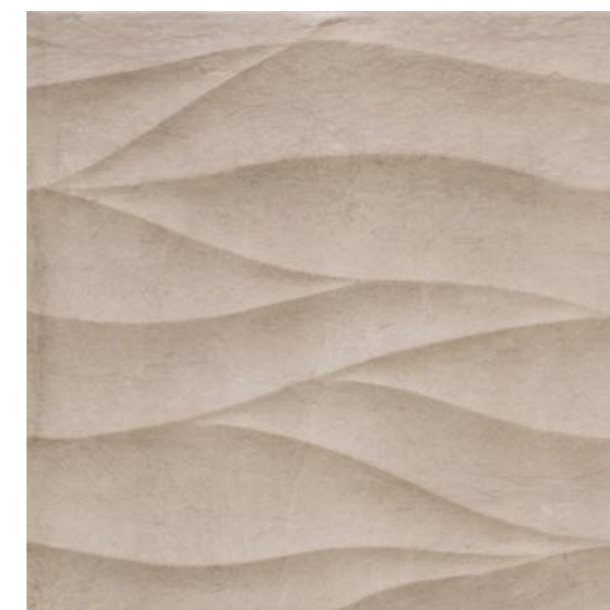
G2054A FOUSSANA SAND RIVER LAPP. RETT. 45x90 - 17,7"x35,4" 66



G30803 ANG. BACCHETTA ALLUMINIO 1,5x1,5 - 0,6"x0,6" 6



G30804 ANG. BACCHETTA CROMO 1,5x1,5 - 0,6"x0,6" 6



G2020A FOUSSANA SAND AMBRA RETT. 60x60 - 23,6"x23,6" 65



G20419 FOUSSANA SAND MOSAICO 30x30 (tozz. 5x5) 11,8"x11,8" 13



G30158 FOUSSANA SAND MOSAICO 30x30 (tozz. 6x6) 11,8"x11,8" 29



G2078A FOUSSANA MUD LAPP. RETT. 67
20x20 - 7,9"x7,9"



G2069A FOUSSANA MUD LAPP. RETT. 20x60 - 7,9"x23,6" 47



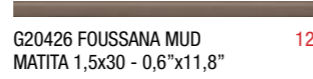
G2062A FOUSSANA MUD LAPP. RETT. 30x60 - 11,8"x23,6" 64



G2059A FOUSSANA MUD LAPP. RETT. 60x60 - 23,6"x23,6" 65



G30157 FOUSSANA MUD BATTISCOPA 8x60 - 3,1"x23,6" 16



G20426 FOUSSANA MUD
MATITA 1,5x30 - 0,6"x11,8" 12



G20427 FOUSSANA MUD
TORELLO 3,5x30 - 1,4"x11,8" 21



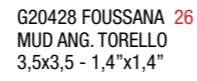
G2063A FOUSSANA MUD LAPP. RETT. 67
7,5x30 - 2,9"x11,8"



G2066A FOUSSANA MUD LAPP. RETT. 64
30x30 - 11,8"x11,8"



G2058A FOUSSANA MUD LAPP. RETT. 45x90 - 17,7"x35,4" 66



G20428 FOUSSANA
MUD ANG. TORELLO
3,5x3,5 - 1,4"x1,4" 26



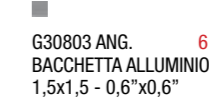
G20425 FOUSSANA MUD
COPRIFILO 1,5x30 - 0,6"x11,8" 17



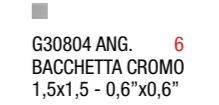
G30801 BACCHETTA ALLUMINIO
1,5x90 - 0,6"x35,4" 19



G30802 BACCHETTA CROMO
1,5x90 - 0,6"x35,4" 19



G30803 ANG.
BACCHETTA ALLUMINIO
1,5x1,5 - 0,6"x0,6" 6



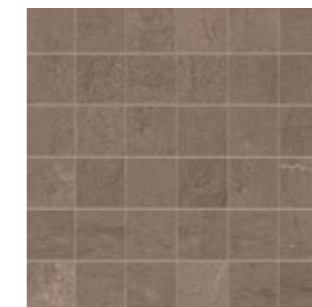
G30804 ANG.
BACCHETTA CROMO
1,5x1,5 - 0,6"x0,6" 6



G2057A FOUSSANA MUD RIVER LAPP. RETT. 45x90 - 17,7"x35,4" 66



G2023A FOUSSANA MUD AMBRA RETT. 60x60 - 23,6"x23,6" 65



G20421 FOUSSANA MUD
MOSAICO 30x30 (tozz. 5x5) 11,8"x11,8" 13



G30160 FOUSSANA MUD
MOSAICO 30x30 (tozz. 6x6) 11,8"x11,8" 29

SOLUZIONI DI POSA - LAYING SOLUTION - Предложения по укладке

Foussana Sand 20x60 - 7,9"x23,6" - Gray 20x60 - 7,9"x23,6"



Foussana Sand 20x60 - 7,9"x23,6" - Mud 20x20 - 7,9"x7,9"

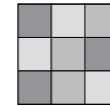


Foussana Mud 20x60 - 7,9"x23,6" - Sand 20x20 - 7,9"x7,9"



CARATTERISTICHE TECNICHE				GRES PORCELLANATO IMPASTO COLORATO
Technical Characteristics - Caractéristiques Techniques - Technische Eigenschaften				
CONFORME - ACCORDING TO - CONFORME - GEMÄß: ANSI 137.1 Impervious porcelain tiles				
	CARATTERISTICHE TECNICHE TECHNICAL CHARACTERISTICS CARACTÉRISTIQUES TECHNIQUES TECHNISCHE EIGENSCHAFTEN	METODO DI PROVA ASTM TEST METHOD ASTM MÉTHODE D'ESSAI ASTM PRÜFMETHODE ASTM	REQUISITI PRESCRITTI Required Value Valeur Requise Vorgeschriebener Wert ANSI 137.1	VALORI Value/ Valeur/ Wert VALLELUNGA SMALTATO GLAZED GL
	ASSORBIMENTO D'ACQUA WATER ABSORPTION ABSORPTION D'EAU WASSERABSORPTION	EN-ISO 10545-3	0,5% (fully vitrified)	≤ 0,05
	RESISTENZA ALLA ROTTURA BREAKING MODULUS RÉSISTANCE À LA FLEXION BIEGEFESTIGKEIT	EN-ISO 10545-4	≥250 Pounds ≥113 Kg ≥1110 N	CONFORME Compliant
	DUREZZA MOHS MOHS HARDNESS DURETÉ MOHS HÄRTE MOHS	EN-ISO 101		MOHS 5
	RESISTENZA ALL'ABRASIONE ABRASION RESISTANCE RÉSISTANCE À L'ABRASION ABRASIONSWIDERSTÄNDIGKEIT	EN-ISO 10545-7	NON RICHIESTO Not required	METODO DI PROVA ISO 10545-7 PEI IV
	RESISTENZA AGLI SBALZI TERMICI THERMAL SHOCK RESISTANCE RÉSISTANCE AUX CHOC THERMIQUES TEMPERATURWECHSELBESTÄNDIGKEIT	ASTM C484	RICHIESTO required	RESISTENTE Resistant
	RESISTENZA ALL'ATTACCO CHIMICO CHEMICAL RESISTANCE RÉSISTANCE CHIMIQUE CHEMISCHE BESTÄNDIGKEIT	EN-ISO 10545-13	NON RICHIESTO Not required	RESISTENTE Resistant
	RESISTENZA AL GELO FROST RESISTANCE RÉSISTANCE AU GEL FROSTBESTÄNDIGKEIT	EN-ISO 10545-12	NON RICHIESTO Not required	RESISTENTE Resistant
	RESISTENZA ALLE MACCHIE STAIN RESISTANCE RÉSISTANCE AUX TACHES FLECKENBESTÄNDIGKEIT	EN-ISO 10545-14	NON RICHIESTO Not required	RESISTENTE Resistant
	COEFFICIENTE DI ATTRITO DINAMICO DYNAMIC FRICTIONS FROTTEMENT DYNAMIQUE DYNAMISCHE REIBUNG	BOT 3000 ANSI A 137.1	WET ≥ 0,42	CONFORME Compliant
	SPESORE THICKNESS ÉPAISSEUR STÄRKE	ASTM C485 Planarit Warpage	≤ 1,0% Sui lati/On sides ≤ 0,75% Sulle diagonali/On diagonals	CONFORME Compliant
		ASTM C499 Dimensioni Dimensions	≤ 3,0% Sulle dimensioni nominali Of nominal dimensions ≤ 1,5% Differenza nel lotto tra valori min. e max./Difference in batch between min. and major values	CONFORME Compliant
		ASTM C499 Spessore Thickness	≤ 0,040 inch Differenza nel lotto tra spessore min. e max./Difference in batch between min. and major thickness	CONFORME Compliant
		ASTM C502 Parallelismo dei lati Wedging	≤ 1,0 %	CONFORME Compliant

AMOUNT OF
COLOUR
VARIATION



V3
HIGH
COLOR
VARIATION

Foussana

Imballaggi - packing - emballages - verpackung - Упаковки

Formato	Pezzi/scatola	Mq/scatola	Kg/scatola	Scatole/pallet	Mq/pallet	Kg/pallet	Spessore
Size cm	Pieces/box	Sq.Mt./box	Weight/box	Box/pallet	Sq.Mt./pallet	Weight/pallet	Thickness
Format cm	Pièces/boîte	Mq/boîte	Poids/boîte	Boîte/pallet	Mq/pallet	Poids/pallet	Épaisseur
Формат см	Stück/Karton	Qm/Karton	Gewichte/Karton	Karton/pallet	Qm/pallet	Gewichte/pallet	Stärke
	Изделий/коробку	M2/коробку	Kr/коробку	Коробок/паллеты	M2/паллеты	Kr/паллеты	Толщина
45x90 Fondo	3	1,22	28,5	32	39,04	940	10
60x60 Fondo	3	1,08	25,3	40	43,2	1032	10
30x60 Fondo	6	1,08	25,3	40	43,2	1032	10
20x60 Fondo	9	1,08	22,46	48	51,84	1098,08	10
20x20 Fondo	25	1	21	60	60	1280	10
30x30 Fondo	13	1,17	27,4	40	46,8	1116	10
7,5x30 Fondo	26	0,585	12,90	60	35,1	794	10
60x60 Ambra	3	1,08	25,3	40	43,2	1032	10
45x90 River	3	1,22	28,5	32	39,04	940	10
30x30 Mosaico (tozz. 6x6)	6	-	9,86	-	-	-	
30x30 Mosaico (tozz. 5x5)	11	-	18,15	-	-	-	
3,5x30 Torello	6	-	1,158	-	-	-	
3,5x3,5 Angolo Torello	10	-	-	-	-	-	
1,5x30 Matita	6	-	0,65	-	-	-	
1,5x30 Coprifilo	8	-	0,27	-	-	-	
8x60 Battiscopa	20	-	20	-	-	-	



01036 NEPI (VT) Loc. Settevene Via dell'Industria n, 7 Tel. 0761 5291 - 4 linee - Fax. 0761 527156
www.vallelungacer.it - www.vallelungaceramica.ru