

# HERITAGE

45 x 45 / 60 x 60 cm.  
18 x 18" / 24 x 24"



Heritage Mono Natural Rec 60 x 60 cm. / Forever Arce 22,5 x 90



Heritage Mono Nat 45 x 45 cm. **77K** A40 (M<sup>2</sup>)  
Heritage Mono SP Rec 45 x 45 cm. **8FC** A48 (M<sup>2</sup>)



Heritage Multi Nat 45 x 45 cm. **77J** A40 (M<sup>2</sup>)  
Heritage Multi SP Rec 45 x 45 cm. **8FD** A48 (M<sup>2</sup>)



Heritage Mono Nat Rec 60 x 60 cm. **77G** A47 (M<sup>2</sup>)  
Heritage Mono SP Rec 60 x 60 cm. **8FE** A48 (M<sup>2</sup>)



Heritage Multi Nat Rec 60 x 60 cm. **77H** A47 (M<sup>2</sup>)  
Heritage Multi SP Rec 60 x 60 cm. **8FF** A48 (M<sup>2</sup>)

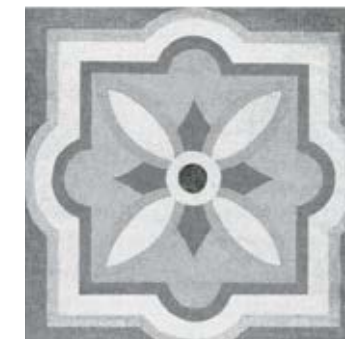


# HERITAGE

45 x 45 / 60 x 60 cm.  
18 x 18" / 24 x 24"



Heritage Multi Nat 60 x 60 / Cement Grey 45 x 90



Heritage Mono Dec-A 45 x 45 cm. **81L** A40 (M²)



Heritage Mono Dec-B 45 x 45 cm. **81M** A40 (M²)



Heritage Mono Dec-C 45 x 45 cm. **81N** A40 (M²)



Heritage Mono Dec-D 45 x 45 cm. **81O** A40 (M²)



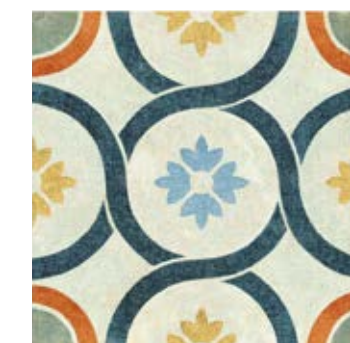
Heritage Mono Dec-E 45 x 45 cm. **81P** A40 (M²)



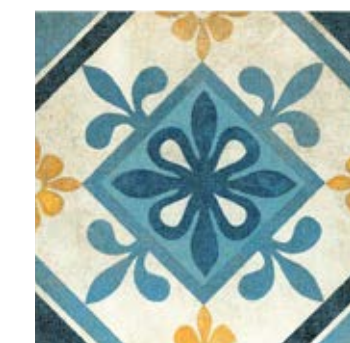
Heritage Mono Dec-F 45 x 45 cm. **81Q** A40 (M²)



Heritage Multi Dec-A 45 x 45 cm. **81F** A40 (M²)



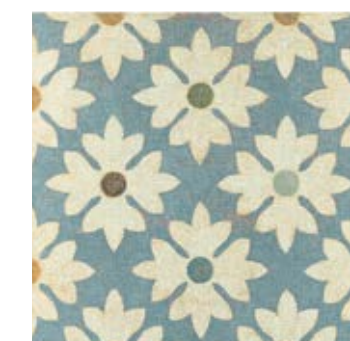
Heritage Multi Dec-B 45 x 45 cm. **81G** A40 (M²)



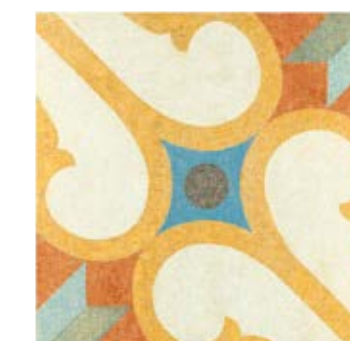
Heritage Multi Dec-C 45 x 45 cm. **81H** A40 (M²)



Heritage Multi Dec-D 45 x 45 cm. **81I** A40 (M²)



Heritage Multi Dec-E 45 x 45 cm. **81J** A40 (M²)



Heritage Multi Dec-F 45 x 45 cm. **81K** A40 (M²)

|                                 |                               |                          |                      |                      |                                       |
|---------------------------------|-------------------------------|--------------------------|----------------------|----------------------|---------------------------------------|
| REC                             |                               | 45 x 45 cm.              | 60 x 60 cm.          | FUERTE STRONGLY      |                                       |
|                                 |                               |                          |                      |                      |                                       |
| POLIVALENTE<br>MULTI-FLOOR TILE | PORCELÁNICO<br>PORCELAIN TILE | RECTIFICADO<br>RECTIFIED | ESPESOR<br>THICKNESS | ESPESOR<br>THICKNESS | JUNTA<br>JOINT                        |
|                                 |                               |                          |                      |                      | DEFORMACIÓN<br>SHADED                 |
|                                 |                               |                          |                      |                      | VIVIENDAS<br>HOME                     |
|                                 |                               |                          |                      |                      | COMERCIOS<br>STORES                   |
|                                 |                               |                          |                      |                      | RESISTENTE<br>HYGIENIC                |
|                                 |                               |                          |                      |                      | INTERIOR                              |
|                                 |                               |                          |                      |                      | ANTIHIELO<br>FROST PROOF              |
|                                 |                               |                          |                      |                      | CTE<br>UNE EN 12663<br>NON-SLIP VALUE |
|                                 |                               |                          |                      |                      | R9<br>DIN 51130<br>TEST DIN 51130     |