



POP

WOW!

**IL BOSS MI CHIAMA ALL'ALBA: "HAI UN CASO DA RISOLVERE".
UN BEL CASO... SENZA DUBBIO.**

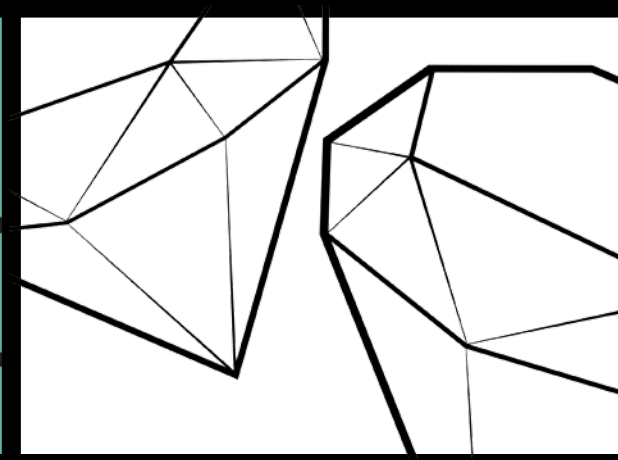
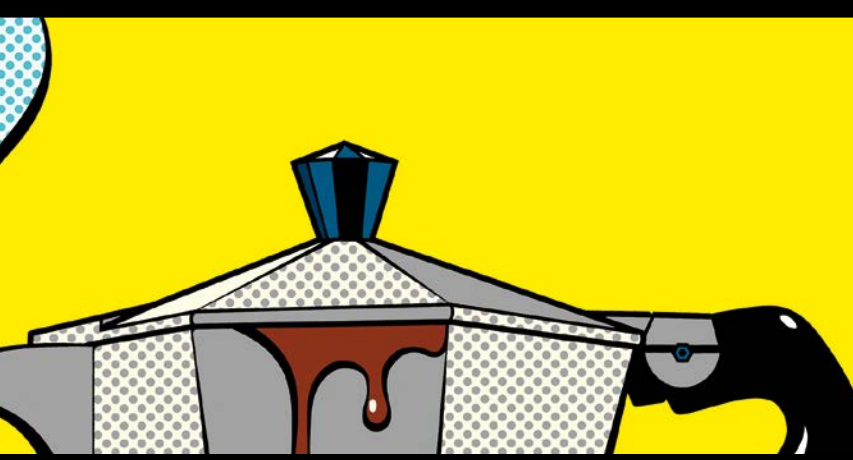
**SONO STANCA DA MORIRE, MA PER LUI QUESTO E ALTRO.
LUI CHI? NON IL BOSS, OVVIO, INTENDO IL SOSPETTATO, CON QUEL FASCINO CRIMINALE.**

OK, SONO PRONTA. ESCO.

*My boss calls me at dawn: "You have a case to solve".
An interesting case, no doubt.*

*I'm beat, but for him this is the least I can do. Which him? Not the
boss, obviously, I mean the suspect, with that criminal allure.*

Ok, I'm ready. I leave the house.



**LO PEDINO ED È QUASI BRACCATO.
GLI PIACCIONO I GIOIELLI, E ANCHE A ME DEL RESTO.
COME PROVE SCATTO DUE FOTO E PENSO CHE È PROPRIO IL MIO TIPO.**

**ALTO, MORO, DIFFICILE RESISTERE.
COME FACCIÒ AD ARRESTARLO?**

SEDUZIONE, LA MIA ARMA MIGLIORE.

I tail him and he's almost ensnared.

He likes the jewellery, I do too after all.

I shoot off two pictures as proof and realise that he's just my type.

Tall, dark and hard to resist. How can I arrest him?

Seduction, my best weapon.



**MI AVVICINO, LO FISSO NEGLI OCCHI E GLI DICO
"CIAO TENEBROSO, ANDIAMO A FARE UN GIRO".
APRO LA BORSA E MI CHIEDE "È UN PROFUMO?".
NO, SBAGLIATO, SPRAY AL PEPERONCINO.
ADESSO SEI MIO, TESORO.**

**SQUILLA IL TELEFONO.
È IL BOSS CHE MI CHIEDE "L'HAI PRESO?".
CI PENSO UN SECONDO.
NO, È SCAPPATO.**

I draw closer, look into his eyes and tell him

"Hi dangerous, shall we take a stroll".

I open my bag and he asks "is it a perfume?".

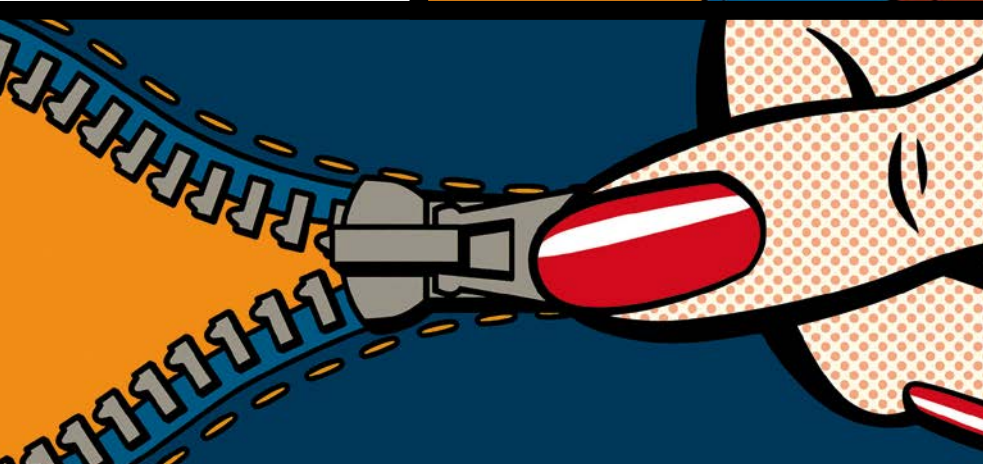
No, wrong, pepper spray.

Now you're mine sweetheart.

The telephone rings. It's my boss who asks: "Did you get him?".

I think for a moment.

No, he escaped.



INDICAZIONI D'USO

indications for use
instructions d'utilisation
anwendungsbereich
indicaciones de uso
указания по
использованию
upute o korištenju
使用说明



RIVESTIMENTO

Wall tiles
Revêtement
Wandfliese
Revestimiento
Облицовка
Zidovi
墙面

DESTINAZIONI D'USO

suggested applications
destination
anwendungsbereich
lugar de empleo
предназначение
krajnja namjena
用途



ABITAZIONE

dometisc purpose
habitation
wohnbereich
habitación
жилое помещение
stanovanje
住宅

FINITURA

finish
finition
Oberfläche
acabado
отделка
obrađenost
终加工



NATURALE

natural
naturel
natur
matt
природный
prirodne
自然式

STRUTTURA

structure
structuré
Struktur
estructura
структура
struktura
结构



STRUTTURATO

slate cut
structuré
strukturiert
estructurado
Структурированный
Strukturirane
结构式

ASPETTO SUPERFICIALE

surface look
aspect superficial
Aussehen der Oberfläche
aspecto superficial
внешний вид
izgled površine
表面外观



LUCIDO

glossy
brillant
glänzend
brillante
гляцевый
sjajno
抛光

BORDO

edge
bord
rand
borde
кромка
rub
边缘



DRITTO

straight
droit
gerade
derecho
прямой
ravne
直线型

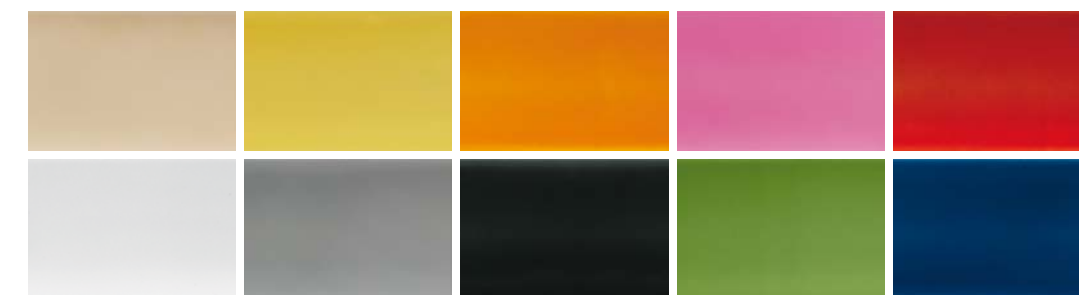
STONALIZZAZIONE

shade variation
variation de nuances
schattierung
destonalización
Разброс цветового тона
Gradacija
石质化



V1

POP



12,5x33,33

4,9"x13"



BICOTTURA

Double fired tiles
Bicuisson
Zweibrandfliesen
Bicocción
Бикоттура
Dvokratno paljenje
二次烧制

MADE IN ITALY
PRODOTTO ESCLUSIVAMENTE IN ITALIA





- B.POP F
- B.POP W
- CARTOON 1 MIX
- CARTOON 2 MIX
- COOL F
- POP F
- POP W
- WOOD 161W



pop

B.POP F

B.POP W

CARTOON 1 MIX

CARTOON 2 MIX

COOL F

POP F

POP W





CARTOON 1 MIX

CARTOON 2 MIX

POP N

POP W

WOOD 161V



pop

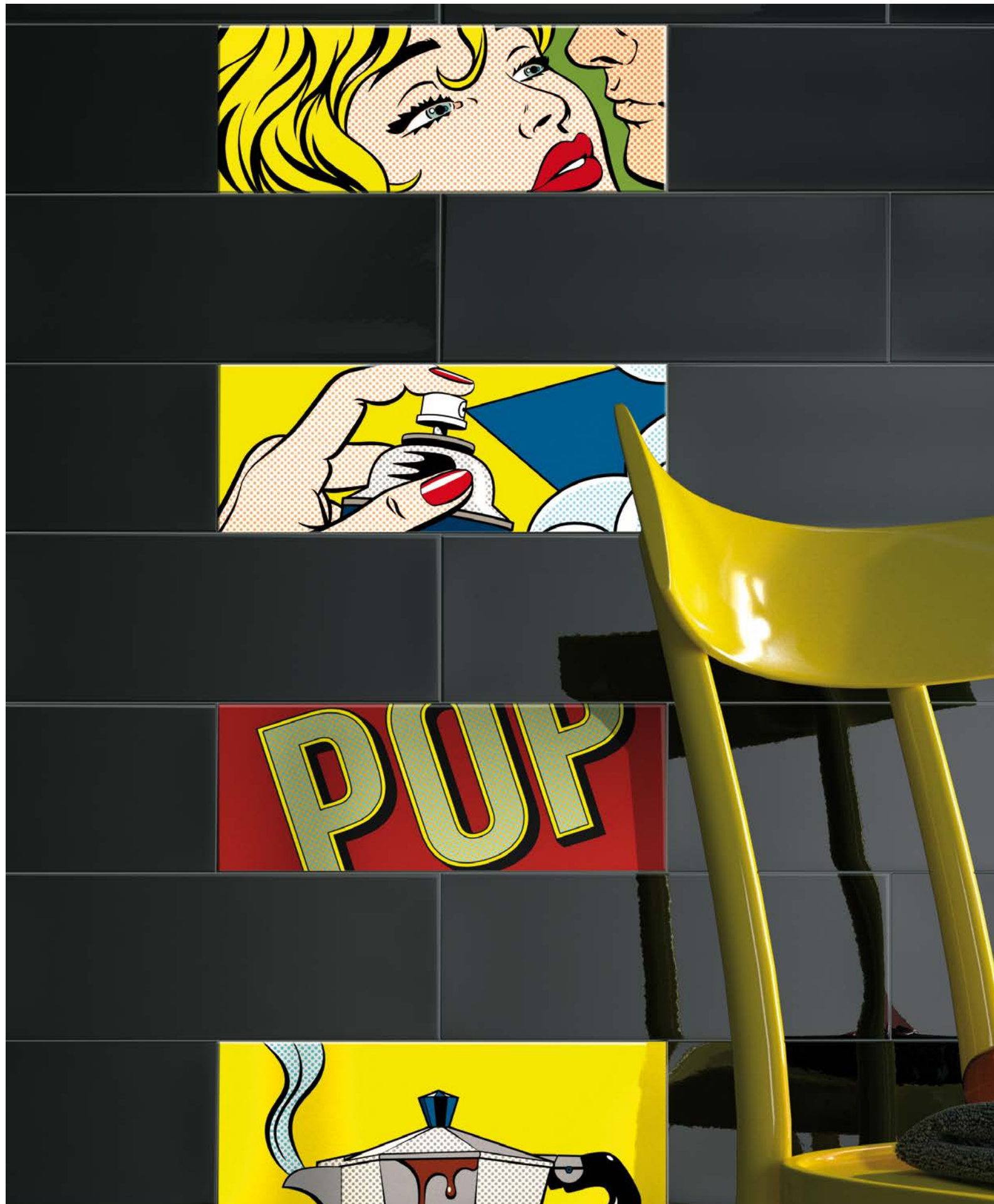
CARTOON 1 MIX

CARTOON 2 MIX

POP N

POP W

WOOD 161V





CONPROJ 60B

COOL V

POP J

POP V



pop

COOL V

POP J

POP V





COOL B

COOL DM

COOL O

COOL R

CREACON 90B

POP B

POP DM

POP O

POP R



pop

COOL B

COOL DM

COOL O

COOL R

CREACON 90B

POP B

POP DM

POP O

POP R







POP B
12,5x33,3 - 4,9"x13,1"



B.POP B
3x33,3 - 1,8"x13,1"



POP J
12,5x33,3 - 4,9"x13,1"



B.POP J
3x33,3 - 1,8"x13,1"



POP O
12,5x33,3 - 4,9"x13,1"



B.POP O
3x33,3 - 1,8"x13,1"



POP DM
12,5x33,3 - 4,9"x13,1"



B.POP DM
3x33,3 - 1,8"x13,1"



POP R
12,5x33,3 - 4,9"x13,1"



B.POP R
3x33,3 - 1,8"x13,1"



COOL B
12,5x33,3 - 4,9"x13,1"



COOL J
12,5x33,3 - 4,9"x13,1"



COOL O
12,5x33,3 - 4,9"x13,1"



COOL DM
12,5x33,3 - 4,9"x13,1"



COOL R
12,5x33,3 - 4,9"x13,1"



SPLASH B1
12,5x33,3 - 4,9"x13,1"



SPLASH J1
12,5x33,3 - 4,9"x13,1"



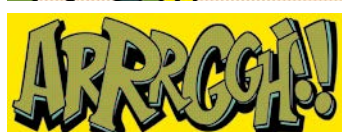
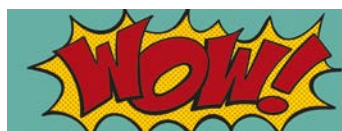
SPLASH O1
12,5x33,3 - 4,9"x13,1"



SPLASH DM1
12,5x33,3 - 4,9"x13,1"



SPLASH R1
12,5x33,3 - 4,9"x13,1"



CARTOON 1 MIX
12,5x33,3 - 4,9"x13,1"

CARTOON 2 MIX
12,5x33,3 - 4,9"x13,1"



POP W
12,5x33,3 - 4,9"x13,1"



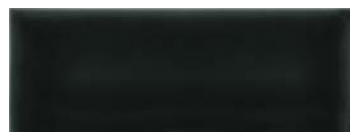
B.POP W
3x33,3 - 1,8"x13,1"



POP G
12,5x33,3 - 4,9"x13,1"



B.POP G
3x33,3 - 1,8"x13,1"



POP N
12,5x33,3 - 4,9"x13,1"



B.POP N
3x33,3 - 1,8"x13,1"



POP V
12,5x33,3 - 4,9"x13,1"



B.POP V
3x33,3 - 1,8"x13,1"



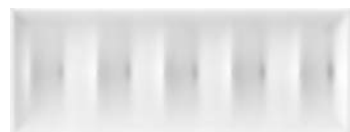
POP F
12,5x33,3 - 4,9"x13,1"



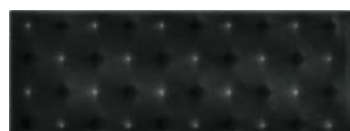
B.POP F
3x33,3 - 1,8"x13,1"



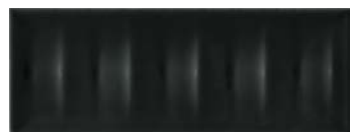
COOL W
12,5x33,3 - 4,9"x13,1"



COOL G
12,5x33,3 - 4,9"x13,1"



COOL N
12,5x33,3 - 4,9"x13,1"



COOL V
12,5x33,3 - 4,9"x13,1"



COOL F
12,5x33,3 - 4,9"x13,1"



SPLASH W1
12,5x33,3 - 4,9"x13,1"



SPLASH G1
12,5x33,3 - 4,9"x13,1"



SPLASH N1
12,5x33,3 - 4,9"x13,1"



SPLASH V1
12,5x33,3 - 4,9"x13,1"



SPLASH F1
12,5x33,3 - 4,9"x13,1"



CARTOON 1 MIX
12,5x33,3 - 4,9"x13,1"



CARTOON 2 MIX
12,5x33,3 - 4,9"x13,1"



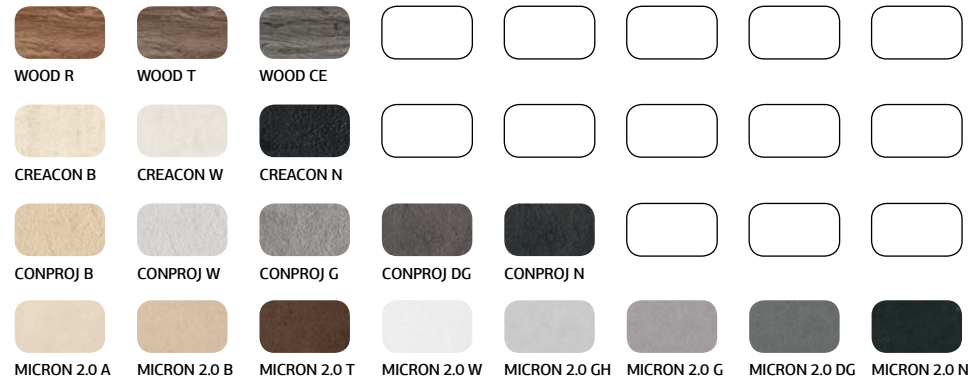
WOOD - CREATIVE CONCRETE - CONCRETE PROJECT - MICRON 2.0



POP B



POP J



POP O



WOOD - CREATIVE CONCRETE - CONCRETE PROJECT - MICRON 2.0



POP DM



POP R





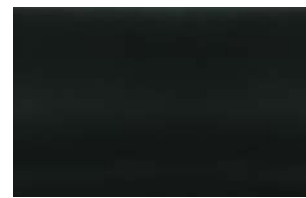
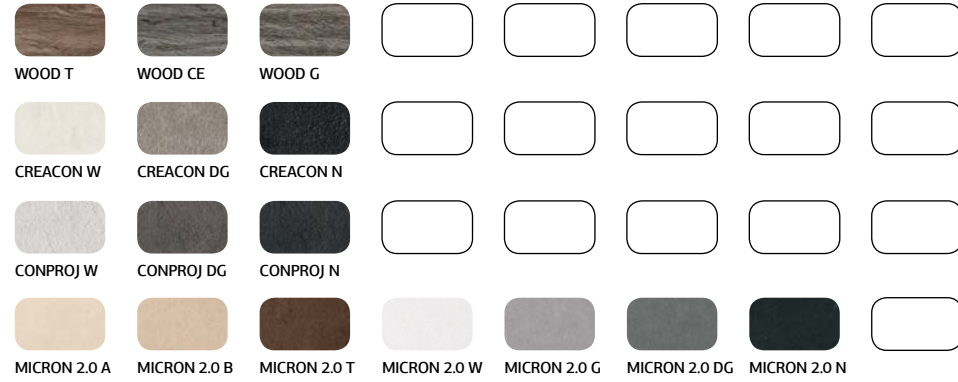
WOOD - CREATIVE CONCRETE - CONCRETE PROJECT - MICRON 2.0



POP W



POP G



POP N



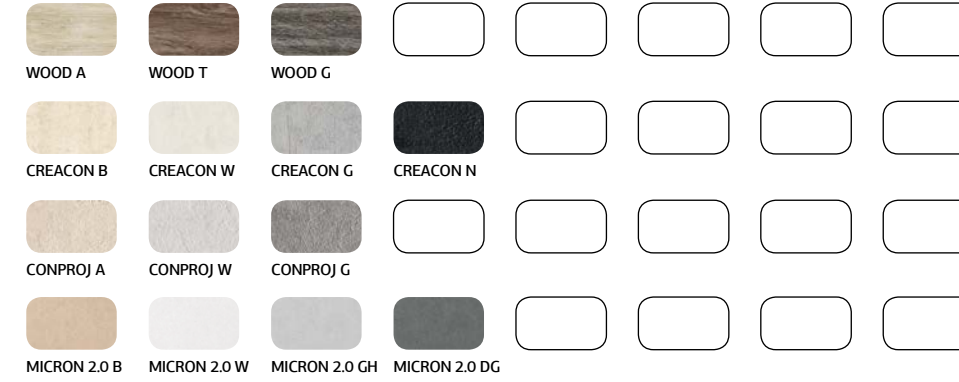
WOOD - CREATIVE CONCRETE - CONCRETE PROJECT - MICRON 2.0



POP V



POP F



ECO

La natura e la tecnologia si fondono per dar vita a un nuovo concetto di ceramica che mette al centro il rapporto tra l'uomo e l'ambiente; un binomio inscindibile per il conseguimento consapevole dei principi di eco-efficienza aziendale ed eco-compatibilità ambientale sigillata da importanti riconoscimenti.

Nature and technology combine to give birth to a new concept in ceramic tiles which places the relationship between man and the environment at the centre; an inseparable combination for the conscious achievement of eco-efficient corporate principles as well as those of environmental eco-compatibility, sealed with important recognitions.

La nature et la technologie se fondent pour donner naissance à un nouveau concept de céramique qui met au centre le rapport entre l'homme et l'environnement; un binôme indissociable pour que les principes d'éco-efficience de l'entreprise et d'éco-compatibilité environnementale une fois acquis soient reconnus par d'importants labels.

Natur und Technik verbinden sich, um ein neues Konzept der Keramik zu schaffen, in dessen Mitte die Beziehung zwischen Mensch und Umwelt steht; eine untrennbare Zweisamkeit für die bewusste Durchführung der Prinzipien der ökologischen Effizienz auf Firmenebene und der Umweltverträglichkeit, die durch wichtige Anerkennungen besiegelt sind.

La naturaleza y la tecnología se funden para dar vida a un nuevo concepto de cerámica que subraya la relación entre el hombre y el ambiente; un binomio inseparable para alcanzar los principios de eco-eficiencia empresarial y eco-compatibilidad ambiental sellado por importantes reconocimientos.

Природа и технология слились воедино для воплощения новой концепции в керамике, ставящей в центр отношение между человеком и окружающей средой; неразрывный симбиоз для сознательного достижения принципов эффективного природосбережения и экологической совместимости, скрепленных значительными признаниями.

Priroda i tehnologija se spajaju u rađanju novog koncepta keramike što se usredotočuje na odnos čovjeka i okoliša; nerazdvojna kombinacija za svjesno ostvarivanje načela ekološke učinkovitosti poduzeća i ekološke kompatibilnosti, potvrđena značajnim priznanjima.

自然与技术结合，带来全新的陶瓷理念，以人与自然的关系为中心，落实企业生态效率和环境兼容性原则，获得多项重要认证。





**COOPERATIVA
CERAMICA
D'IMOLA**

Cooperativa Ceramica d'Imola S.c.

Via V. Veneto, 13 - 40026 Imola BO, Italia
Tel. +39 0542 601601 - Fax +39 0542 31749
info@ccimola.it - ccimola.it

imolaceramica.it
info@imolaceramica.it

